

Tree of Life

Designed by Mary Koval

Featuring the Palampore & Tree of Life ca 1830 Collections by Mary Koval

Size: 78" x 97"



Check www.windhamfabrics.com Free Project section to see if there are any pattern updates before you start your quilt project

WINDHAM FABRICS

812 Jersey Ave ~ Jersey City, NJ 07310 ~ 201.659.0444 ~ FAX: 201.659.9719
www.windhamfabrics.com email: retail@windhamfabrics.com

Tree of Life

Page 2

Fabric Selections



40360-1 Beige



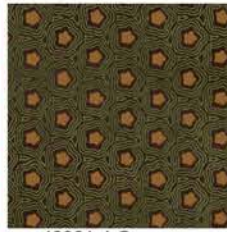
40360-X Multi



40361-2 Blue



40361-3 Brown



40361-4 Green



40362-2 Blue



40362-3 Brown



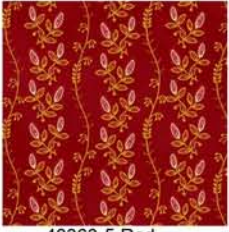
40362-5 Red



40363-2 Blue



40363-4 Green



40363-5 Red



40364-2 Blue



40364-3 Brown



40365-3 Brown



40365-6 Tan



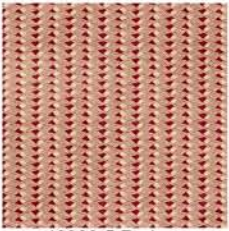
40365-7 Yellow



40366-3 Brown



40366-4 Green



40366-5 Red



40366-7 Yellow



40367-3 Brown



40367-4 Green



40367-5 Red



40368-2 Blue



40368-3 Brown



40368-5 Red



40369-X Multi

Tree of Life

Page 3

Finished Quilt Size: 78" x 97"

Finished Hourglass Block Size: 5" x 5"

Finished Square-in-a-Square Block Size: 5" x 5"

MATERIALS:

(1) 87" x 47" Palampore panel (40369-X)

Fat Eighth each of (12) Assorted light prints

(40360-1 Beige, 40362-2 Blue, 40362-5 Red, 40364-2 Blue, 40364-3 Brown, 40367-3 Brown, 40367-4 Green, 40367-5 Red, 40368-3 Brown, 40368-5 Red, 40366-5 Red, 40366-7 Yellow)

Fat Eighth each of (12) Assorted medium to dark prints

(40361-2 Blue, 40361-3 Brown, 40361-4 Green, 40362-3 Brown, 40363-2 Blue, 40363-4 Green, 40363-5 Red, 40365-3 Brown, 40365-6 Tan, 40365-7 Yellow, 40366-4 Green, 40366-3 Brown)

Fat Quarter of a Dark green/gold star (40361-4 Green)

Fat Quarter of a Multi-color floral (40360-X Multi)

1-5/8 yards of a Blue etching (40368-2 Blue)

3/4 yard of binding fabric (40363-2 Blue)

6 yards of backing fabric

86" x 105" piece of batting

CUTTING:

From the Palampore panel, cut:

(1) 36-1/2" x 75-1/2" fussy cut center panel

(2) 5-1/2" x 75-1/2" fussy cut side panels

(2) 5-1/2" x 46-1/2" fussy cut top and bottom panels

Tree of Life

Page 4

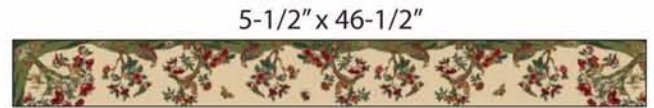
- From EACH of the (12) Assorted light prints, cut:
(3) 6-3/4" x 6-3/4" squares
From EACH of the (12) Assorted dark prints, cut:
(3) 6-3/4" x 6-3/4" squares
From the Dark green/gold star, cut:
(16) 3" x 3" squares
From the Multi-color floral, cut:
(4) 5-1/2" x 5-1/2" squares
From the Blue etching, cut:
(8) 6-1/2" x 42 strips
From the binding fabric, cut:
(9) 2-1/2" x 42" strips

INSTRUCTIONS:

Making the Hourglass Blocks:

(NOTE: Extra 6-3/4" x 6-3/4" light and medium to dark squares have been cut to allow for choice in color combinations.)

1. Draw a diagonal line on the wrong side of each of the (36) 6-3/4" x 6-3/4" assorted light print squares.
2. Place a marked light square, right sides together, on (1) 6-3/4" x 6-3/4" assorted medium to dark print square.
3. Sew 1/4" away on both sides of the drawn line. Cut on the drawn line to make 2 light/dark half-square triangle units. Press seams open. Make a total of 64 half-square triangle units.



36-1/2" x 75-1/2"



5-1/2" x 46-1/2"

Diagram #1

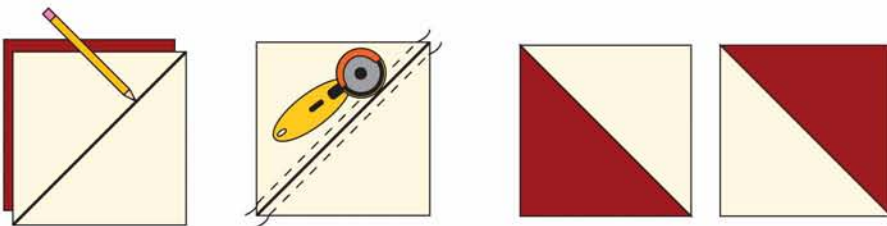


Diagram #2

Tree of Life

Page 5

4. Draw a diagonal line on the wrong side of 32 of the half-square triangle units that is perpendicular to the seam.
5. Place a marked half-square triangle unit, right sides together, on 1 unmarked half-square triangle unit, aligning the seams placing the light prints on opposite sides.
6. Sew $\frac{1}{4}$ " away on both sides of the drawn line. Cut on the drawn line to make 2 light/dark hour glass blocks. Press seams open. Center and trim, if needed, to measure $5\frac{1}{2}$ " x $5\frac{1}{2}$ " square. Make a total of 64 hourglass blocks.

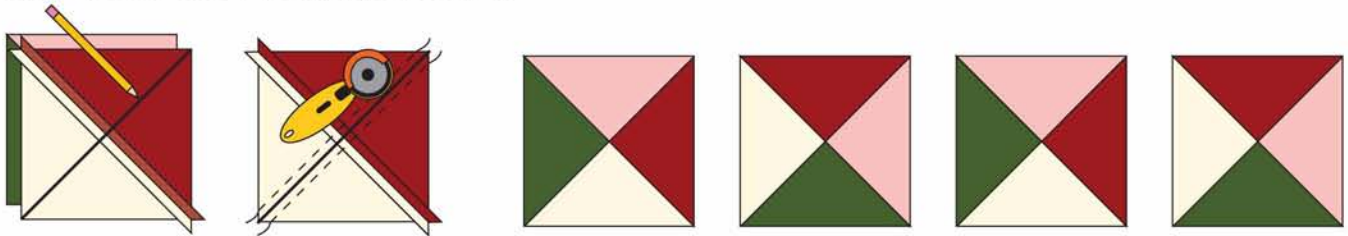


Diagram #3

Making the Square-in-a-Square Blocks:

1. Draw a diagonal line on the wrong side of (16) 3 " x 3 " dark green/gold star squares.
2. Place 2 marked squares, right sides together, on opposite corners of (1) $5\frac{1}{2}$ " x $5\frac{1}{2}$ " multi-color floral square as shown.
3. Sew on the drawn lines. Trim $\frac{1}{4}$ " beyond the drawn lines and press the corners out.
4. Place 2 marked squares, right sides together, on the remaining corners of the floral square as shown.
5. Sew on the drawn lines. Trim $\frac{1}{4}$ " beyond the drawn lines and press the corners out to make a square-in-a-square block. Make a total of 4 square-in-a-square blocks.

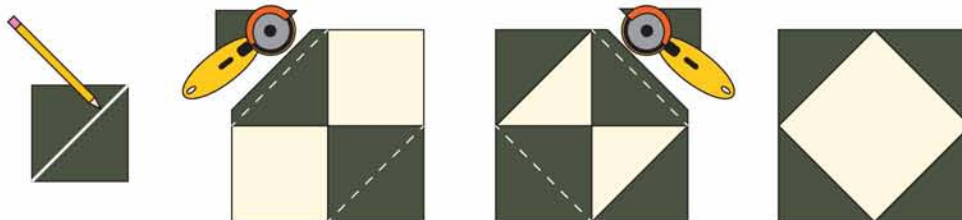


Diagram #4

Assembling the Quilt:

1. Refer to the Quilt Assembly diagram; lay out 15 Hourglass blocks, vertically, aligning the dark triangles on the top and bottom of each block.
2. Sew the blocks together to make a $5\frac{1}{2}$ " x $75\frac{1}{2}$ " side hourglass panel. Make 2 panels.
3. Sew the 2 side hourglass panels to the long sides of the $36\frac{1}{2}$ " x $75\frac{1}{2}$ " Palampore center panel.
4. Sew the cream side of (2) $5\frac{1}{2}$ " x $75\frac{1}{2}$ " Palampore side panels to the hourglass sides of the center panel.
5. Sew a square-in-a-square block to each end of 1 Palampore top/bottom panel. Make 2.
6. Sew the cream side of the top/bottom panels to the top and bottom of the center panel.

Tree of Life

Page 6

7. Lay out 17 Hourglass blocks, vertically, aligning the dark triangles on the top and bottom of each block.
8. Sew the blocks together to make a 5-1/2" x 85-1/2" side hourglass panel. Make 2 panels.
9. Sew the 2 side hourglass panels to the long sides of the center panel.
10. Sew the short ends of (8) 6-1/2" x 42" blue etching strips together, noting the orientation of the print, to make a long strip. Crosscut the long strip into (2) 6-1/2" x 78-1/2" strips and (2) 6-1/2" x 85-1/2" strips.
11. Sew the (2) 85-1/2" strips to the hourglass sides of the quilt.
12. Sew the (2) 78-1/2" strips to the top and bottom of the quilt.



Diagram #5

Finishing the Quilt:

1. Prepare the backing with a vertical seam to measure 86" x 105". Press seams open.
2. Layer and quilt as desired. Bind the quilt using the (9) 2-1/2" x 42" binding strips.

Be sure to visit www.windhamfabrics.com to see the complete collection and to download this and other Free Projects