

Neighborhood

Designed by Heidi Pridemore
Featuring the Neighborhood Collection by Alyson Beaton
Size: 65" x 77"



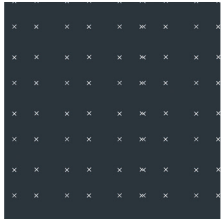
Check www.windhamfabrics.com Free Project section to see if there are any pattern updates before you start your quilt project



812 Jersey Ave – Jersey City, NJ 07310 – 201.659.0444 ~ FAX: 201.659.9719
www.windhamfabrics.com email: retail@windhamfabrics.com

Neighborhood

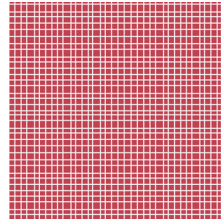
Page 2



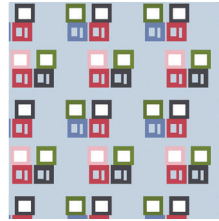
41288-2 Charcoal



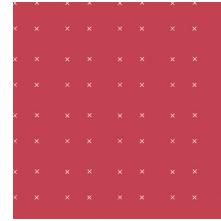
41284-1 Lt. Blue



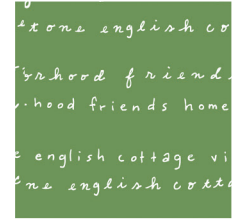
41287-6 Red



41285-1 Lt. Blue



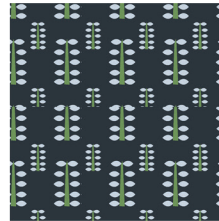
41288-6 Red



41283-5 Green

Estimated Fabric Requirements:

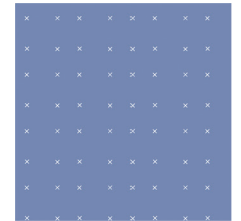
- 1 1/8 yards – 41288-2 Charcoal
- 1/4 yard – 41284-1 Lt. Blue
- 1 yard – 41287-6 Red
- 1 yard – 41285-1 Lt. Blue
- 1/2 yard – 41288-6 Red
- 1 yard – 41283-5 Green
- 1/8 yard – 41286-2 Charcoal
- 1 1/4 yard – 41283-4 Grey
- 1/2 yard – 41288-7 Blue
- 1/3 yard – 41284-6 Red
- 1/3 yard – 41287-4 Grey
- 1/3 yard – 41281-1 Lt. Blue
- 2 yards – 41281-2 Charcoal
- 1 1/4 yards – 31835 White
- 1/2 yard – 41286-1 Lt. Blue
- 4 1/4 yards – 41282-3 White



41286-2 Charcoal



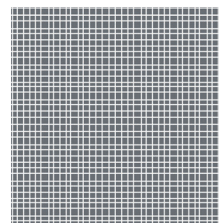
41283-4 Grey



41288-7 Blue



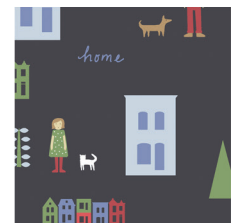
41284-6 Red



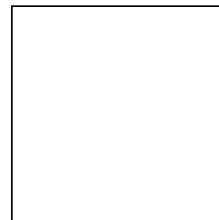
41287-4 Grey



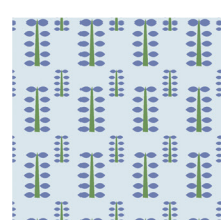
41281-1 Lt. Blue



41281-2 Charcoal



31835 White



41286-1 Lt. Blue



41282-3 White

Cutting Instructions:

Fabric A: Crosses – Charcoal

- Cut one 18 1/2" x width of fabric (WOF) strip. Sub-cut the strip into one 7" x 18 1/2" strip, one 4 1/2" x 18 1/2", one 3" x 10 1/2" strip, one 2 1/2" x 10 1/2" strip, one 2 1/2" x 9 1/2" strip, two 4" x 5" strips and four 2 3/4" x 5" strips.
- Cut two 3 1/2" x WOF strips. Sub-cut the strips into twelve 3 1/2" x 6 1/2" strips.
- Cut one 11 1/2" x WOF strip. Sub-cut the strip into eight 1 1/2" x 11 1/2" strips and eight 1 1/2" x 9 1/2" strips.

Fabric B: Dogs – Lt. Blue

- Cut one 5" x WOF strip. Sub-cut the strip into four 3 1/2" x 5" strips.



WINDHAM FABRICS

www.windhamfabrics.com

Neighborhood

Page 3

Fabric C: Grid – Red

- Cut one 18 ½" x WOF strip. Sub-cut the strip into one 9 ½" x 18 ½" strip, four 2 ½" x 3 ½" strips, eight 1 ½" x 3 ½" strips, eight 1 ¼" x 4 ½" strips and four 2" x 3" strips.
- Cut four 2" x WOF strips. Sew the strips together end to end, with diagonal seams, and cut two 2" x 66 ½" strips.
- Cut three 2" x WOF strips. Sew the strips together end to end, with diagonal seams, and cut two 2" x 57 ½" strips.

Fabric D: Boxes – Lt. Blue

- Cut one 33 ½" x WOF strip. Sub-cut the strip into two 4 ½" x 33 ½" strips, two 9 ½" squares, one 2 ½" x 26 ½" WOF strip, twelve 3 ½" x 2 ½" WOF strips, six 2" x 6 ½" WOF strips, six 2 ½" x 6 ½" WOF strips, twenty-four 2" x 1 ¼" WOF strips. (Note: Fabric is directional. Pay attention to the orientation of the strips as you cut them.)

Fabric E: Crosses – Red

- Cut one 9 ½" x WOF strip. Sub-cut the strip into one 6 ½" x 9 ½" strip, four 2 ½" x 3 ½" strips, eight 1 ½" x 3 ½" strips, eight 1 ½" x 4 ½" strips and four 2" x 3" strips.

Fabric F: Words – Green

- Cut one 3 ½" x 26 ½" WOF strip.
- See instructions to cut two tree tops.
- Cut eight 2 ½" x WOF strips for the binding.

Fabric G: Trees – Charcoal

- See instructions to cut two tree trunks.

Fabric H- Words – Grey

- Cut two 2 ½" x 38 ½" length of fabric (LOF) strips.
- Cut two 2 ½" x 30 ½" WOF strips.
- Cut one 3 ½" x WOF strip. Sub-cut ten 2 ½" x 3 ½" strips and four 2" squares.
- Cut one 2" x WOF strip. Sub-cut into eighteen 1 ½" x 2" strips.

Fabric I: Crosses – Blue

- Cut one 6 ½" x WOF strip. Sub-cut the strip into twelve 3 ½" x 6 ½" strips.

Fabric J: Dogs – Red

- Cut one 2 ½" x WOF strip. Sub-cut the strip into four 2 ½" x 3 ½" strips.
- Cut one 4 ½" x WOF strip. Sub-cut the strip into eight 1 ¼" x 4 ½" strips, eight 3 ½" x 1 ½" strips, four 3" x 2" strips.
- Cut one 1 ½" x WOF strip. Sub-cut the strip into four 1 ½" x 3 ½" strips.

Fabric K: Grid – Grey

- Cut one 3 ½" x WOF strip. Sub-cut the strip into fourteen 2 ½" x 3 ½" strips.
- Cut one 2" x WOF strip. Sub-cut the strip into eight 2" squares.
- Cut one 2" x WOF strip. Sub-cut the strip into eighteen 1 ½" x 2" strips.



WINDHAM FABRICS

www.windhamfabrics.com

Neighborhood

Page 4

Fabric L: Houses – Lt. Blue

- Cut one 9 ½" x WOF strip. Sub-cut the strip into four 9 ½" squares.

Fabric M: Houses – Charcoal

- Cut two 4 ½" x 69 ½" strips from LOF.
- Cut two 4 ½" x 65 ½" WOF strips from the remaining fabric, piece as needed.

Fabric N: Plain White

- Cut one 6 ½" x WOF strip. Sub-cut the strip into twelve 3 ½" x 6 ½" strips.
- Cut four 3 ½" x WOF strips. Sub-cut the strips into forty-eight 3 ½" squares.
- Cut four 1 ½" x WOF strips. Sew the strips together end to end, with diagonal seams, and cut two 1 ½" x 64 ½" strips.
- Cut three 1 ½" x WOF strips. Sew the strips together end to end, with diagonal seams, and cut two 1 ½" x 54 ½" strips.

Fabric O: Trees – Lt. Blue

- Cut one 3 ½" x WOF strip. Sub-cut the strip into twelve 2 ½" x 3 ½" strips.
- Cut one 2" x WOF strip. Sub-cut the strip into six 2" x 6 ½" strips.
- Cut one 2 ½" x WOF strip. Sub-cut the strip into six 2 ½" x 6 ½" strips.
- Cut one 2" x WOF strip. Sub-cut the strip into twenty-four 1 ¼" x 2" strips.

Backing: People – White

- Cut two 73" x WOF strips. Sew together and trim to make one 73" x 85" back.

Block Assembly:

1. Place one 9 ½" Fabric D square on the left side of one 9 ½" x 18 ½" Fabric C strip, right sides together (Fig. 1). Sew across the diagonal of the square from the upper right corner to the lower left corner (Fig. 1). Flip open the triangle formed and press (Fig. 2). Trim away the excess fabric from behind the triangle, leaving a ¼" seam allowance.

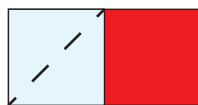


Fig. 1

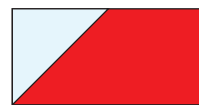


Fig. 2

2. Place another 9 ½" Fabric D square on the right side of the 9 ½" x 18 ½" Fabric C strip, right sides together (Fig. 3). Sew across the diagonal of the square from the upper left corner to the lower right corner (Fig. 3). Flip open the triangle formed and press (Fig. 4). Trim away the excess fabric from behind the triangle, leaving a ¼" seam allowance to make one DCD unit.

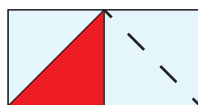


Fig. 3

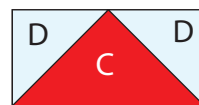


Fig. 4



WINDHAM FABRICS

www.windhamfabrics.com

Neighborhood

Page 5

- Repeat Steps 1-2 using twelve 3 1/2" x 6 1/2" Fabric A strips and twenty-four 3 1/2" Fabric N squares to make twelve NAN units (Fig. 5).

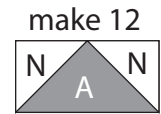


Fig. 5

- Repeat Steps 1-2 using twelve 3 1/2" x 6 1/2" Fabric I strips and twenty-four 3 1/2" Fabric N squares to make twelve NIN units (Fig. 6).

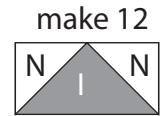


Fig. 6

Note: Follow Figure 7 for Steps 5-8.

- Sew four 2 3/4" x 5" Fabric A strips and three 3 1/2" x 5" Fabric B strips together lengthwise, alternating them, to make one AB strip.
- Sew one 4" x 5" Fabric A strip to each side of one 3 1/2" x 5" Fabric B strip. Sew one 2 1/2" x 10 1/2" Fabric A strip to the top of this block. Sew one 3" x 10 1/2" Fabric A strip to the bottom of the block. Sew one 6 1/2" x 9 1/2" Fabric E strip to the right side of the block. Sew one 2 1/2" x 9 1/2" Fabric A strip to the right side of the Fabric E strip to make one AEA block.
- Sew one DCD unit, one 4 1/2" x 18 1/2" Fabric A strip, one AB strip, one 7" x 18 1/2" Fabric A strip and one AEA block together to make one large house.
- Sew one 4 1/2" x 33 1/2" Fabric D strip to each side of the large house. Sew one 2 1/2" x 26 1/2" Fabric D strip to the top of the large house and one 3 1/2" x 26 1/2" Fabric F strip to the bottom of the large house to make the Center House (Fig. 7).

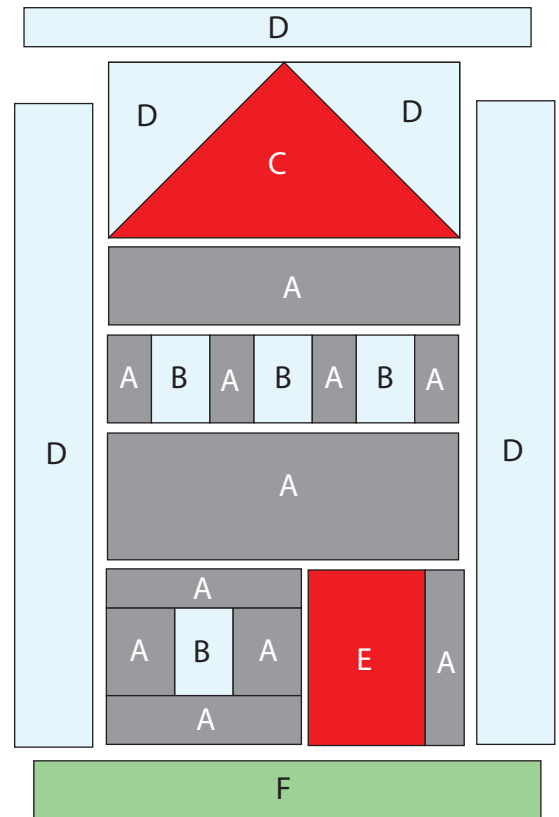


Fig. 7

- Following the manufacturer's instructions, trace the listed number of each template onto the paper side of the fusible web. Roughly cut out each template about 1/8" outside the drawn lines.
- Press each template onto the wrong side of the fabrics as listed on the templates. Cut out each template on the drawn lines.
- Refer to the quilt photo to arrange and press the two Fabric F tree tops and two Fabric G tree trunks onto the Center House block.



WINDHAM FABRICS

www.windhamfabrics.com

Neighborhood

12. Finish the raw edges of each shape with a decorative stitch such as a buttonhole or satin stitch to complete the Center Block (Fig. 8).

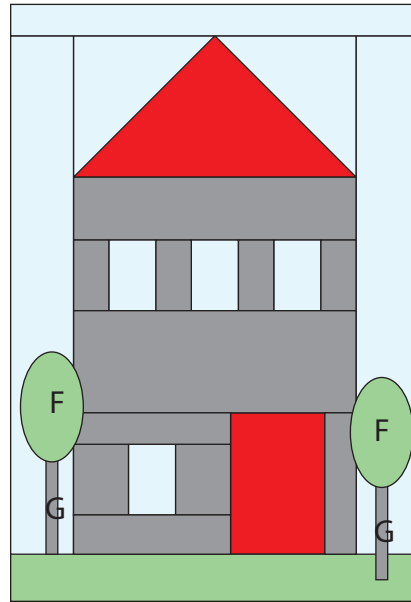


Fig. 8

13. Sew one 1 1/2" x 9 1/2" Fabric A strip to each side of one 9 1/2" Fabric L square. Sew one 1 1/2" x 11 1/2" Fabric A strip to the top and to the bottom of the Fabric L square to make one Corner Block (Fig. 9). Repeat to make four Corner Blocks total.

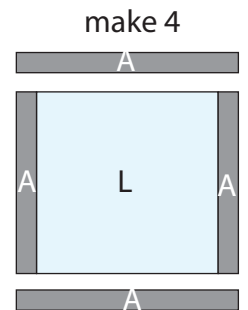


Fig. 9

Note: Follow Figure 10 for Steps 14-16.

14. Sew one 1 1/2" x 3 1/2" Fabric E strip to the left side of one 2 1/2" x 3 1/2" Fabric K strip. Sew one 2 1/2" x 3 1/2" Fabric E strip to the top of this block to make one KE block.

15. Sew one 2" Fabric K square to the top of one 2" x 3" Fabric E strip. Sew one 1 1/4" x 4 1/2" Fabric E strips to each side of this block. Sew one 1 1/2" x 3 1/2" Fabric E strip to the top of the block to make one EE block.

16. Sew the KE block to the left side of the EE block. Sew one NAN unit to the top of the resulting block. Sew one 3 1/2" x 6 1/2" Fabric N strip to the top of the NAN unit to make one E-house (Fig. 10).

17. Repeat Steps 14-16 to make four E-houses total.

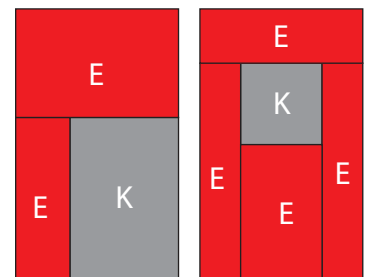
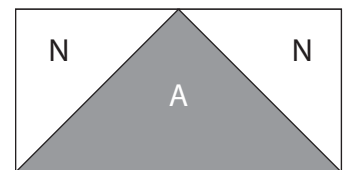
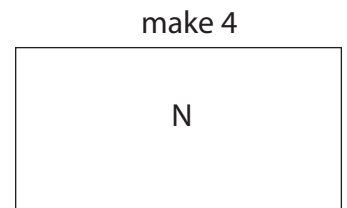


Fig. 10

Neighborhood

Page 7

18. Repeat Steps 14-16 using Fabric J strips instead of Fabric E strips to make four K-houses (Fig. 11).

19. Repeat Steps 14-16 using Fabric C strips instead of Fabric E strips and Fabric H strips instead of Fabric K strips to make four C-houses (Fig. 12).

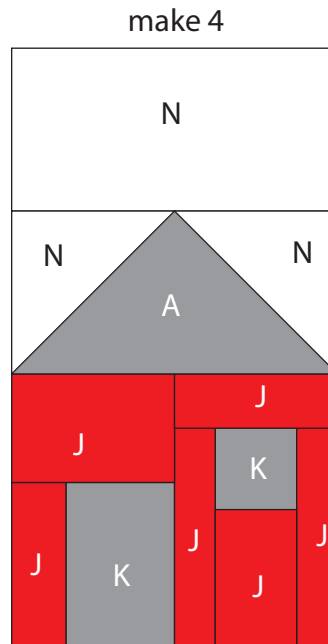


Fig. 11

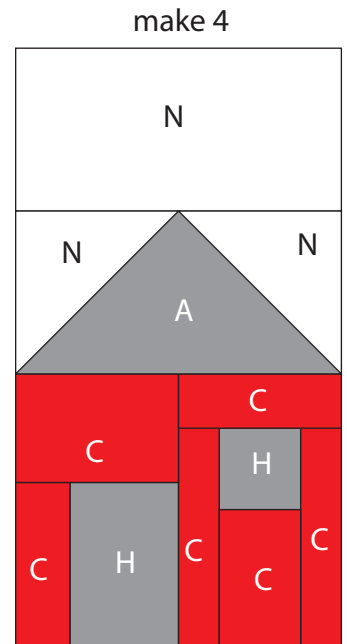


Fig. 12

Note: Follow Figure 13 for Steps 20-22.

20. Sew one 2 ½" x 3 ½" Fabric O strip to each side of one 2 ½" x 3 ½" Fabric K strip to make one OKO unit.

21. Sew four 1 ¼" x 2" Fabric O strips and three 1 ½" x 2" Fabric K strips together lengthwise, alternating them, to make one O-strip.

22. Sew the OKO unit, one 2" x 6 ½" Fabric O strip, one O-strip, one 2 ½" x 6 ½" Fabric O strip and one NIN unit together to make one O-house (Fig. 13).

23. Repeat Steps 20-22 to make six O-houses total.

24. Repeat Steps 20-22 using Fabric D strips instead of Fabric O strips and Fabric H strips instead of Fabric K strips to make six D-houses (Fig. 14).

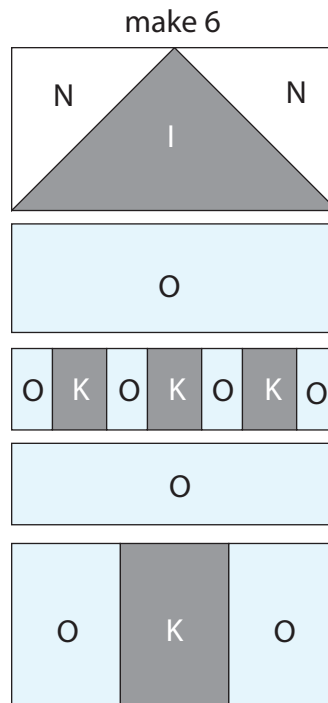


Fig. 13

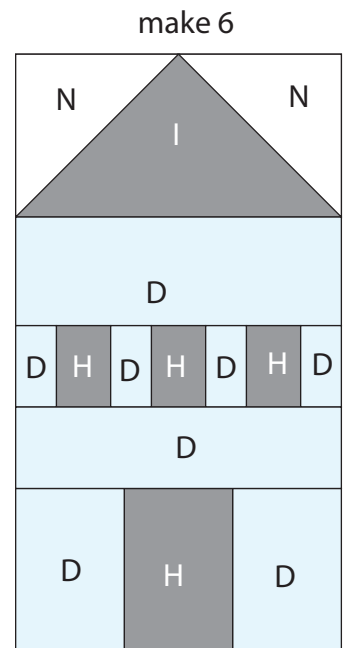


Fig. 14



WINDHAM FABRICS

www.windhamfabrics.com

Neighborhood

Page 8

Quilt Assembly – Refer to the Quilt Layout while assembling the quilt top:

25. Sew one 2 ½" x 38 ½" Fabric H strip to each side of the Center Block. Sew one 2 ½" x 30 ½" Fabric H strip to the top and to the bottom of the Center Block.
26. Sew two O-houses, two D-houses, one E-house, one J-house and one C-house together to make one strip. Repeat to make a second strip. Sew one strip to each side of the Center Block.
27. Sew two Corner Blocks, one E-house, one O-house, one J-house, one D-house and one C-house together to make one strip. Repeat to make a second strip. Sew the strips to the top and to the bottom of the Center Block to make the quilt top.
28. Sew one 1 ½" x 64 ½" Fabric N strip to each side of the quilt top. Sew one 1 ½" x 54 ½" Fabric N strip to the top and to the bottom of the quilt top.
29. Sew one 2" x 66 ½" Fabric C strip to each side of the quilt top. Sew one 2" x 57 ½" Fabric C strip to the top and to the bottom of the quilt top.
30. Sew one 4 ½" x 69 ½" Fabric M strip to each side of the quilt top. Sew one 4 ½" x 65 ½" Fabric M strip to the top and to the bottom of the quilt to.
31. Layer and quilt as desired.
32. Sew the eight 2 ½" x WOF Fabric F strips together, end to end with 45° seams, to make the binding. Fold this long strip in half, lengthwise with wrong sides together, and press.
33. Bind as desired.

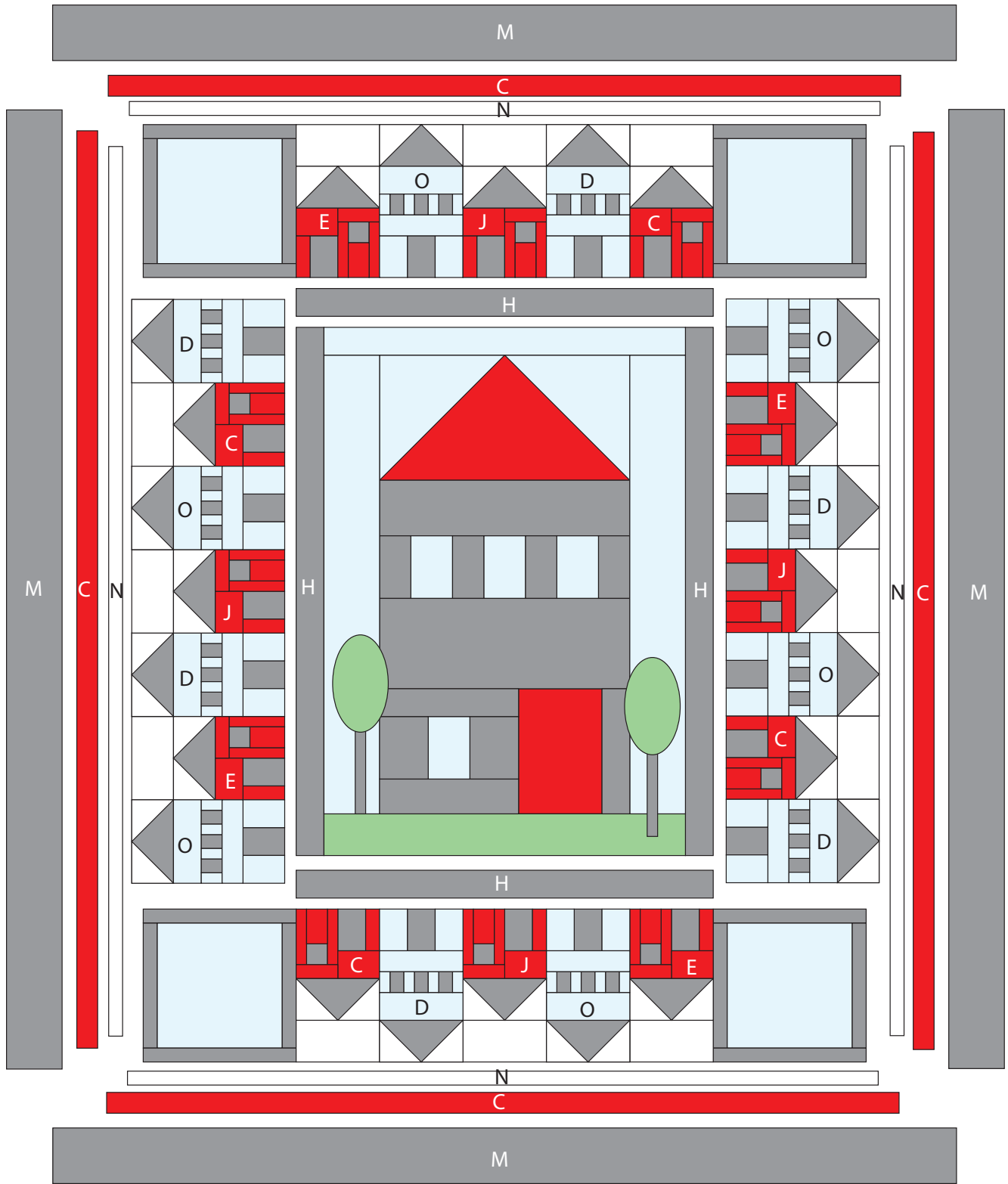


WINDHAM FABRICS

www.windhamfabrics.com

Neighborhood

Page 9



Quilt Layout



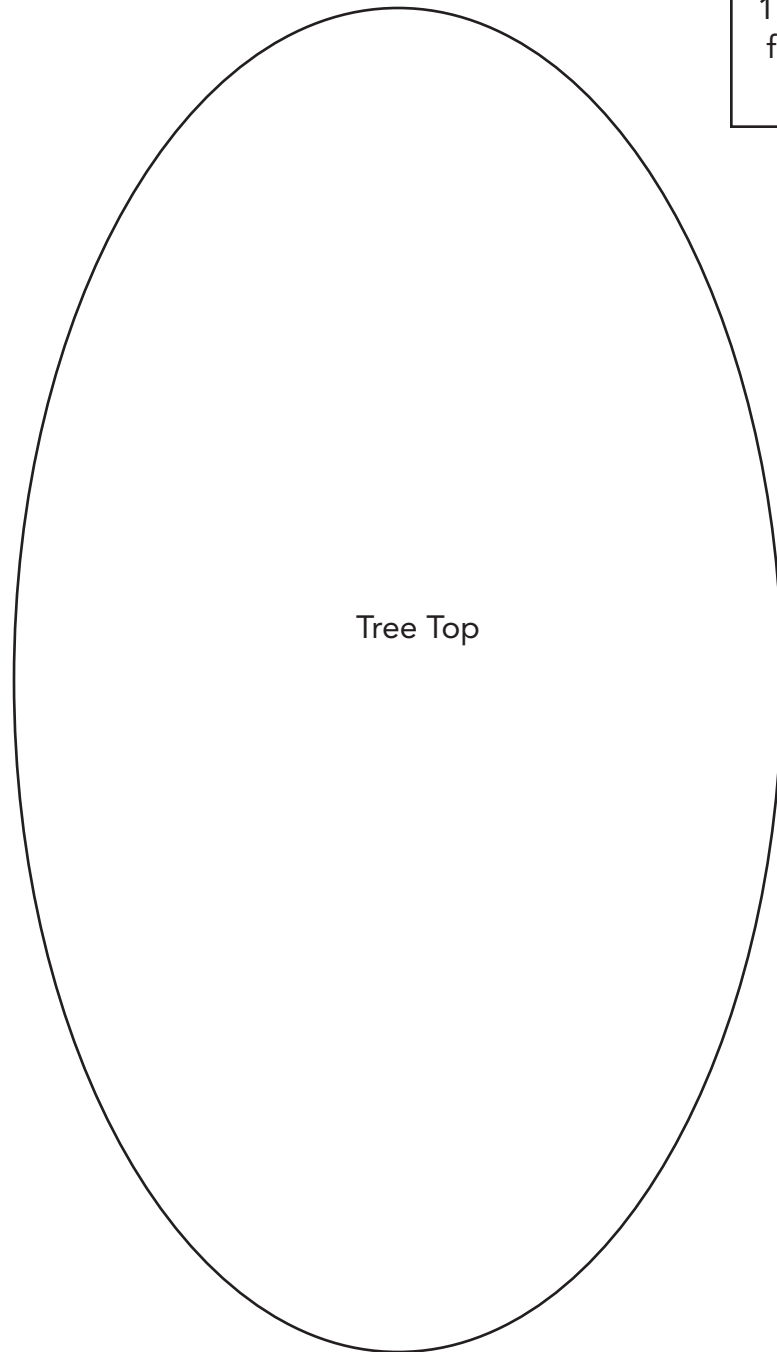
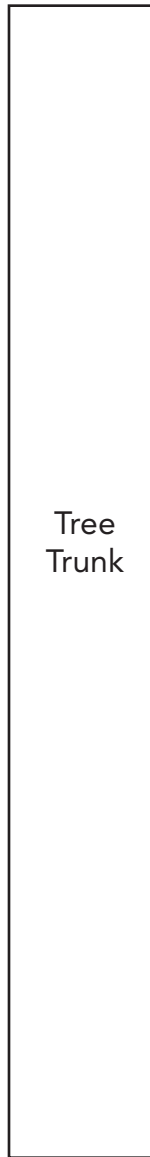
WINDHAM FABRICS

www.windhamfabrics.com

Neighborhood

Page 10

1" square
for scale



Tree Templates

**Be sure to visit www.windhamfabrics.com to see the complete collection
and to download this and other FREE Projects**



WINDHAM FABRICS

www.windhamfabrics.com