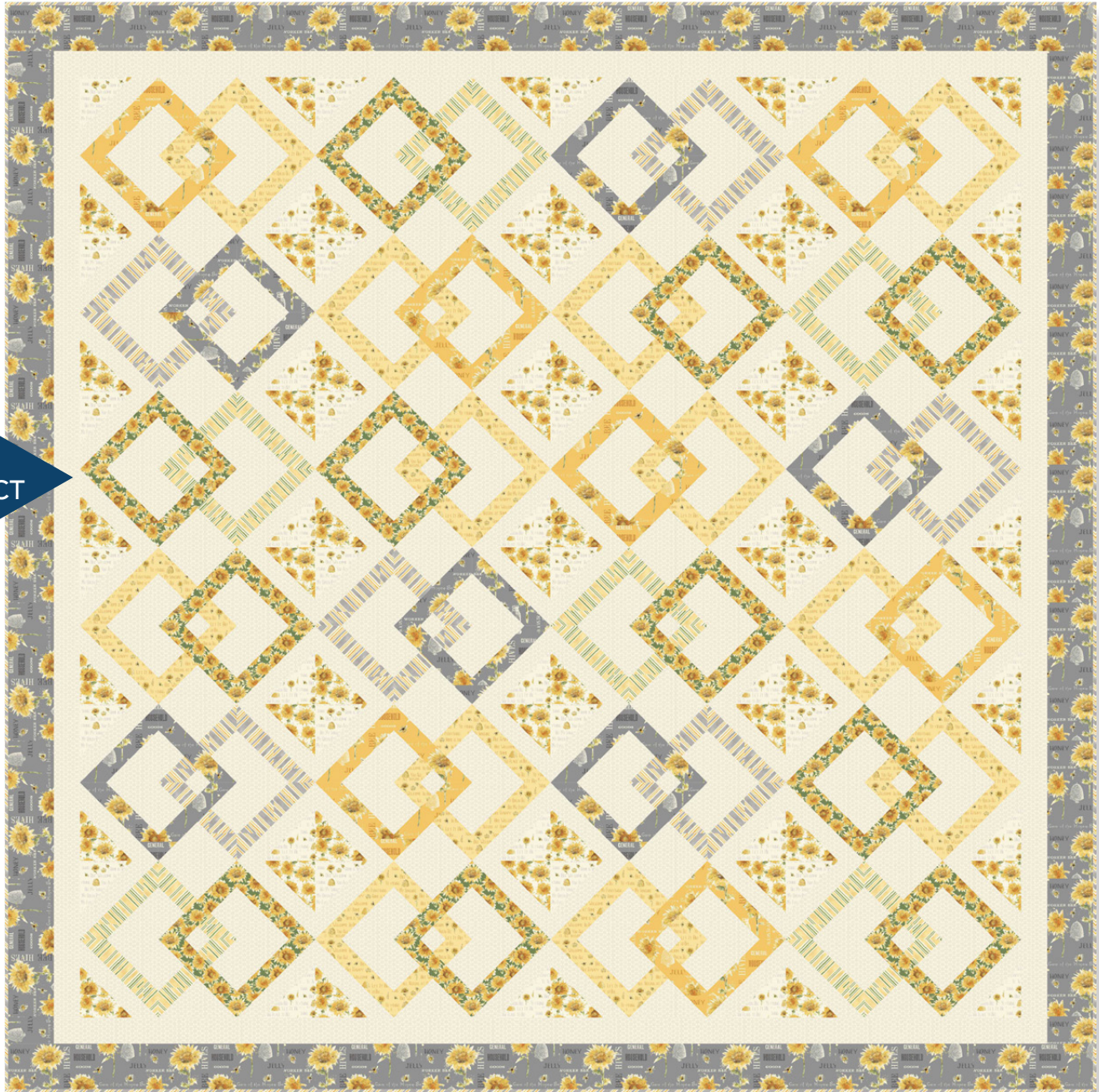


Meadow

Designed by Wendy Sheppard
Featuring Bee My Sunshine by Whistler Studios
SIZE: 83" x 83"



FREE
PROJECT






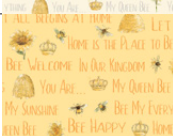

THIS IS A DIGITAL REPRESENTATION OF THE QUILT TOP, FABRIC MAY VARY.

PLEASE NOTE: BEFORE MAKING YOUR PROJECT, CHECK FOR ANY PATTERN UPDATES AT WINDHAMFABRICS.COM'S FREE PROJECTS SECTION.



Meadow

*Cutting Notes: Use caution when cutting 7" squares listed below, as a 7" x 42" strip cuts exactly (6) 7" squares. Refer to the asterisk at the bottom before cutting templates from directional Fabrics **F, H** and **I**.*

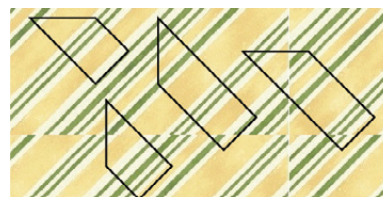
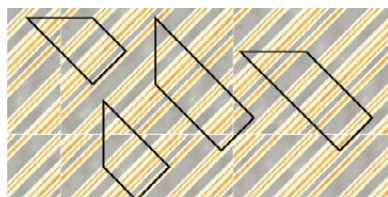
KEY	FABRIC	SKU	YD	CUTTING INSTRUCTIONS
A		43314-1	1 5/8	Outer border: (8) 4" x WOF strips. Piece strips and subcut (2) 4" x 76 1/2" and (2) 4" x 83 1/2" strips. Pieced Blocks: (1) 7" x WOF strip. Subcut (6) 7" x 7" squares. (12) #1 template pieces.
B		43314-2	1	Pieced blocks: (2) 7" x WOF strips. Subcut (7) 7" x 7" squares. (14) #1 template pieces.
C		43315-3	7/8	Pieced blocks: (6) 4 1/2" x WOF strips. Subcut (48) 4 1/2" x 4 1/2" squares.
D		43315-4	1	Pieced blocks: (2) 7" x WOF strips. Subcut (11) 7" x 7" squares. (22) #1 template pieces.
E		43316-3	7/8	Pieced blocks: (6) 4 1/2" x WOF strips. Subcut (48) 4 1/2" x 4 1/2" squares.
F		43316-5	1 1/4	Pieced blocks: (2) 7" x WOF strips. Subcut (12) 7" x 7" squares. (12) #3, (12) #5, (12) #6, and (12) #8 template pieces.*
G		43318-3	5 1/8	Pieced blocks: (8) 7" x WOF strips. Subcut (48) 7" x 7" squares. (11) 4 1/2" x WOF strips. Subcut (96) 4 1/2" x 4 1/2" squares. (48) #2, (96) #4 and (48) #7 template pieces. Inner border: (8) 2 1/2" x WOF strips. Piece strips and subcut (2) 2 1/2" x 72 1/2" and (2) 2 1/2" x 76 1/2" strips.



Meadow

H		43319-1	1 1/2	Pieced blocks: (1) 7" x WOF. Subcut (6) 7" x 7" squares. (6) #3, (6) #5, (6) #6, and (6) #8 pieces using provided templates.* Binding: (9) 2-1/4" x WOF strips. Piece strips to make a continuous binding strip.
I		43319-5	7/8	Pieced blocks: (1) 7" x WOF. Subcut (6) 7" x 7" squares. (6) #3, (6) #5, (6) #6, and (6) #8 pieces using provided templates.*
		Backing	5 1/8	
		Batting		(1) 89" x 89" piece

*Position templates on directional fabrics **F**, **H** and **I** as shown to cut.



Constructing pieced blocks (using B/F block as example)

1. HST units. Draw a diagonal line on the wrong side of (1) **G** 7" x 7" square. Place square, right sides together, on (1) **B** 7" x 7" square. Sew 1/4" on both sides of drawn line and cut along drawn line. Open and press to yield (2) HST units. Trim HST units to measure 6 1/2" x 6 1/2" square.



2. Side units. Draw a diagonal line on the wrong side of (1) 4 1/2" x 4 1/2" **G** square. Place square, right sides together, matching the corners on the **B** patch of HST unit. Sew on drawn line. Trim 1/4" away from sewn line. Open and press to reveal **H** corner triangle.



Meadow

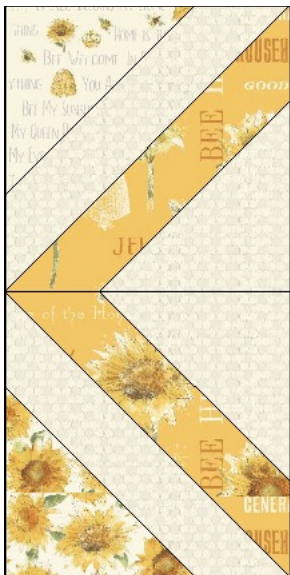
Draw a diagonal line on the wrong side of (1) 4 1/2" x 4 1/2" **E** square. Place square, right sides together, matching the corners on the **G** patch of HST unit. Sew on drawn line. Trim 1/4" away from sewn line. Open and press to reveal **E** corner triangle.



Repeat to make 2 each of the units shown.



Sew together 1 unit each from the colorway into a column unit. Repeat to make (2) outer column units.





Meadow

3. Middle units.

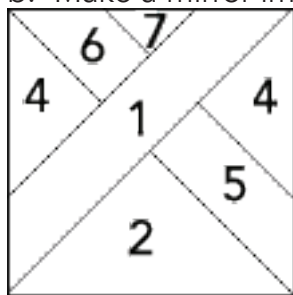
a. Top middle unit.



Refer to unit diagrams, sew together **G** #2, **F** #3 and **G** #4, set unit aside. Repeat with **E** #4, **F** #8 and **G** #7. Then sew units to opposite sides of **B** #1 as shown in diagram below. Block should measure 6 1/2" square unfinished.

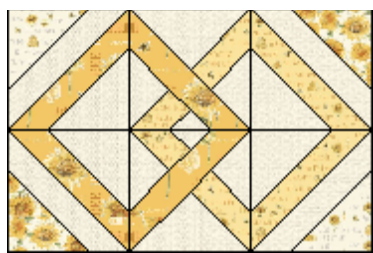


b. Make a mirror image unit using the pieces shown below.



c. Sew top and bottom middle units to make a column.

4. Sew 3 columns together to complete 1 block. Make 7 of Block #1. Block should measure 18 1/2" x 12 1/2".





Meadow

5. Repeat steps 3 and 4 to make Blocks 2-4 in the colorways shown below.

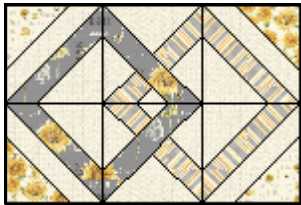
Block #2: 6 blocks

Outer columns:

- (1) 7" A square
- (1) 7" H square
- (2) 7" G squares
- (2) 4 1/2" C squares
- (2) 4 1/2" E squares
- (4) 4 1/2" G squares

Middle column:

- (2) #1 A pieces
- (2) #2 G pieces
- (2) #4 G pieces
- (4) #4 G pieces
- (1) each #3, #5, # 6, and #8 H pieces



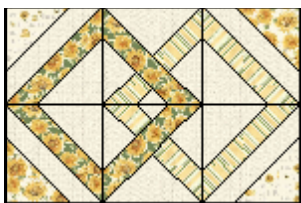
Block #3: 6 blocks

Outer columns:

- (1) 7" D square
- (1) 7" I square
- (2) 7" G squares
- (2) 4 1/2" C squares
- (2) 4 1/2" E squares
- (4) 4 1/2" G squares

Middle column:

- (2) #1 D pieces
- (2) #2 G pieces
- (2) #4 G pieces
- (4) #4 G pieces
- (1) each #3, #5, # 6, and #8 I pieces





Meadow

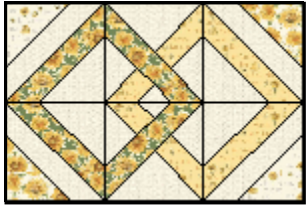
Block #4: 5 blocks

Outer columns:

- (1) 7" D square
- (1) 7" F square
- (2) 7" G squares
- (2) 4 1/2" C squares
- (2) 4 1/2" E squares
- (4) 4 1/2" G squares

Middle column:

- (2) #1 D pieces
- (2) #2 G pieces
- (2) #4 G pieces
- (4) #4 G pieces
- (1) each #3, #5, # 6, and #8 F pieces





Meadow

Quilt Center Assembly

1. Arrange and sew together (4) pieced blocks to make a pieced row. Note block orientations in constructing the rows.
2. Sew pieced rows together to complete quilt center.



Row 1



Row 2



Row 3



Row 4



Row 5



Row 6



Meadow



Quilt Top Assembly

1. Inner border. Sew (2) 2 1/2" x 72 1/2" **G** strips to the opposite sides of quilt center, followed by (2) 2 1/2" x 76 1/2" **G** strips to the remaining opposite sides.
2. Outer border. Sew (2) 4" x 76 1/2" **A** strips to the opposite sides of quilt center, followed by (2) 4" x 83 1/2" **A** strips to the remaining opposite sides to complete quilt top.



Quilting Instructions

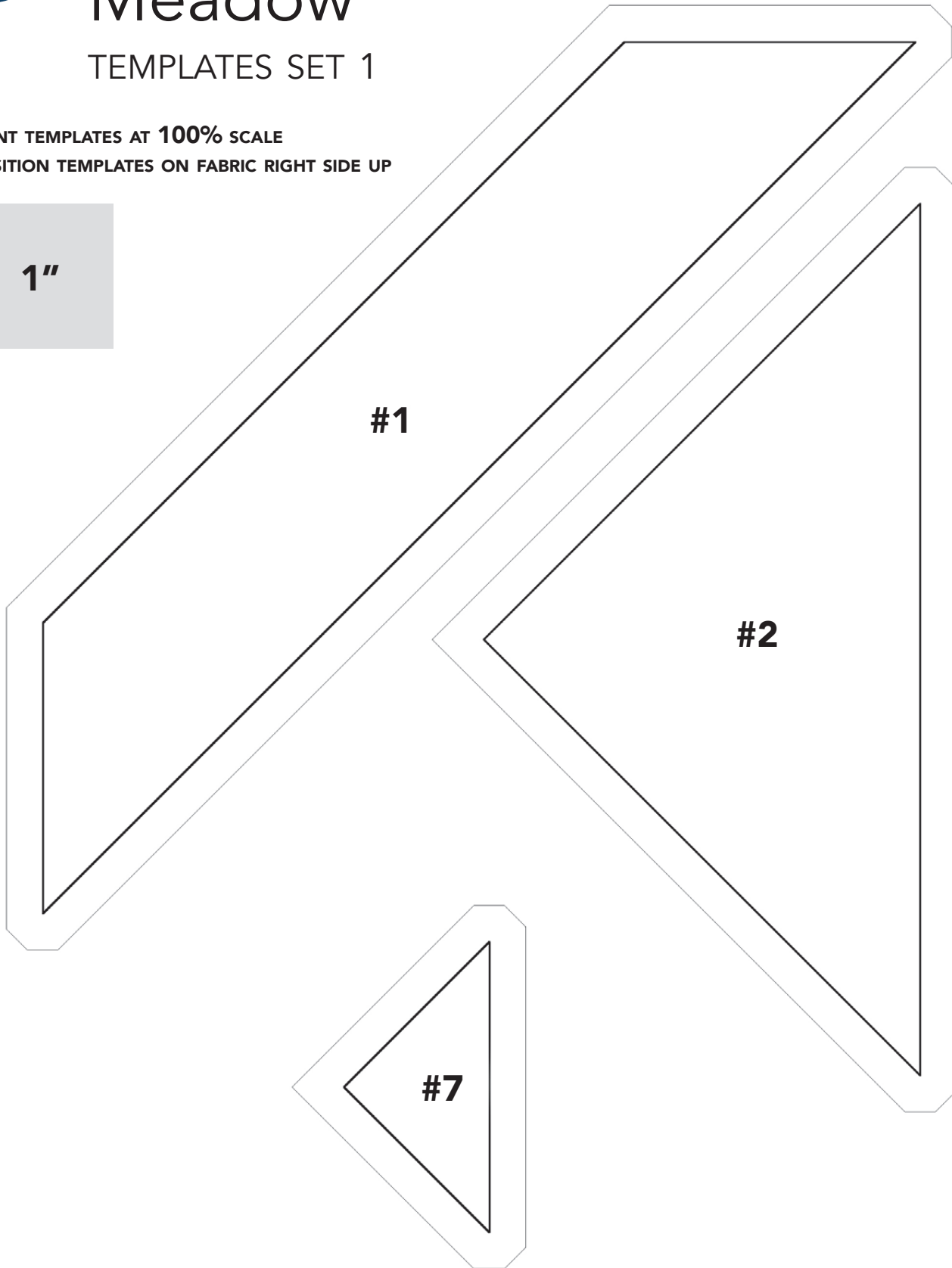
With the backing fabric laying taut, place batting and then quilt top to form quilt sandwich. Baste sandwich. Quilt as desired. Bind to finish quilt.



Meadow

TEMPLATES SET 1

PRINT TEMPLATES AT **100% SCALE**
POSITION TEMPLATES ON FABRIC RIGHT SIDE UP





Meadow

TEMPLATES SET 2

PRINT TEMPLATES AT **100% SCALE**
POSITION TEMPLATES ON FABRIC RIGHT SIDE UP

