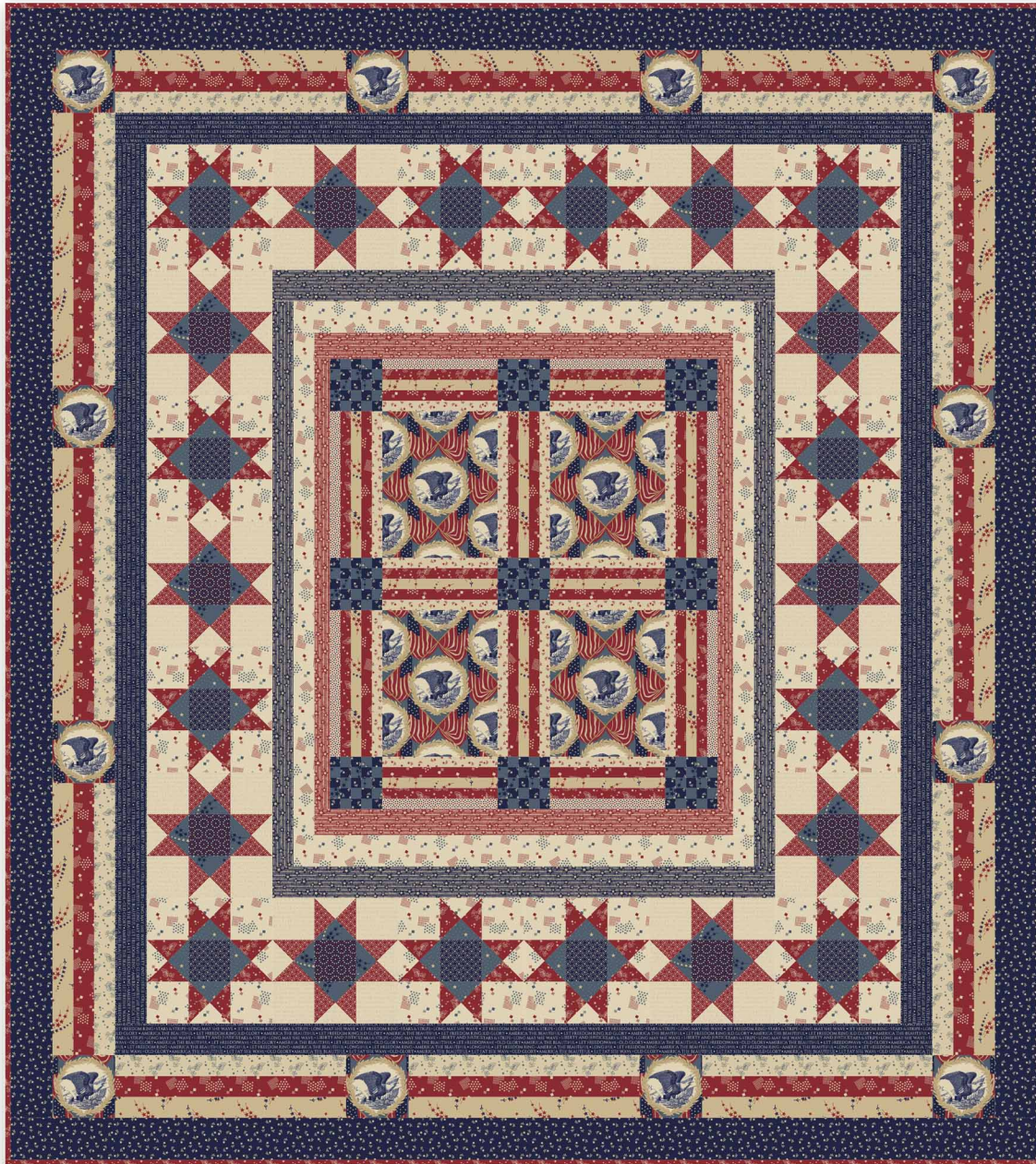


Atop the Mountain

Designed by Bethany Fuller of Grace's Dowry Quilts
Featuring the Let Freedom Ring Collection by Nancy Gere
Size: 49" x 55"



Check www.windhamfabrics.com Free Project section to see if there are any pattern updates before you start your quilt project



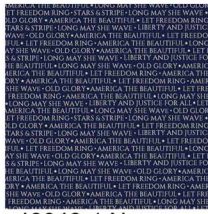
812 Jersey Ave ~ Jersey City, NJ 07310 ~ 201.659.0444 ~ FAX: 201.659.9719
www.windhamfabrics.com email: retail@windhamfabrics.com

Atop the Mountain

Page 2



40947-X Multi



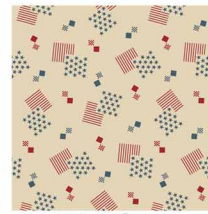
40948-1 Navy



40948-3 Cream



40949-2 Red



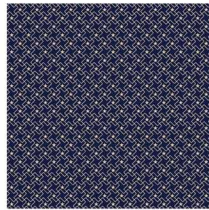
40949-3 Cream



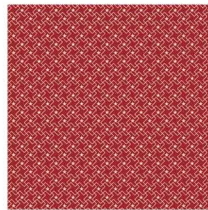
40950-3 Cream



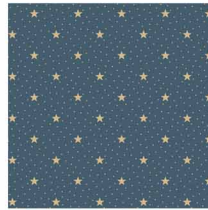
40950-2 Red



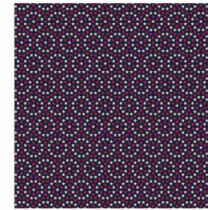
40951-1 Navy



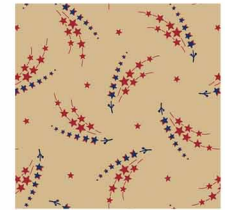
40951-2 Red



40952-4 Cadet



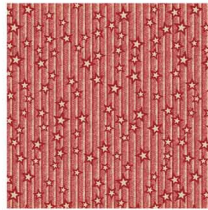
40953-1 Navy



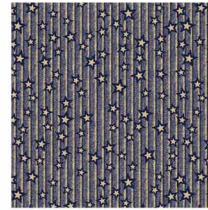
40954-3 Cream



40954-4 Cadet



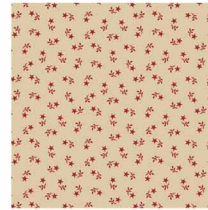
40955-2 Red



40955-1 Navy



40956-1 Navy



40956-5 Cream

Fabric Requirements

3/4 yd Focus Print (40947-X) for Center and Border 6

1/8 yd 40956-5, 40953-3 for Sashing

1/3 yd 40954-3 for Sashing and Border 6

1/3 yd 40949-2 for Sashing and Border 6

2/3 yd 40950-2 for Sashing, Border 4 & Binding

2/3 yd 40956-1 for Cornerstones & Border 7

1/3 yd 40954-4 for Cornerstones & Border 4

1/8 yd 40955-2 for Border 1

5/8 yd 40949-3 for Border 2 & Border 4

1/4 yd 40955-1 for Border 3

1/3 yd 40948-3 for Border 4

1/4 yd 40951-2 for Border 4

1/8 yd 40953-1 for Border 4

1/8 yd 40951-1 for Border 4

1/8 yd 40952-4 for Border 4

1/3 yd 40948-1 for Border 5

1/4 yd 40950-3 for Border 6

3 1/8 yds Backing



WINDHAM FABRICS

Atop the Mountain

Page 3

Cutting and Piecing Instructions

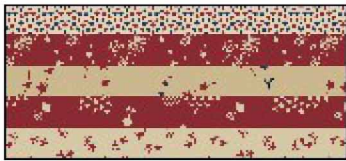
Cut panel print

- 4 - 6" x 7 1/2" rectangles for center
- 12 - 3 1/2" squares fussy cut for Border 6

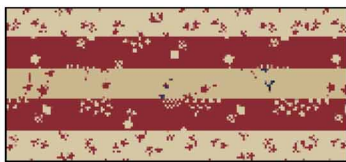
Sashing

- From 40956-5 cut 3 - 1" strips
Sub-cut into 8 - 1" x 6" and 8 - 1" x 7 1/2"
- From 40953-3 cut 2 - 1" strips
Sub-cut into 4 - 1" x 6" and 4 - 1" x 7 1/2"
- From 40954-3 cut 3 - 1" strips
Sub-cut into 6 - 1" x 6" and 6 - 1" x 7 1/2"
- From 40949-2 cut 3 - 1" strips
Sub-cut into 8 - 1" x 6" and 8 - 1" x 7 1/2"
- From 40950-2 cut 2 - 1" strips
Sub-cut into 4 - 1" x 6" and 4 - 1" x 7 1/2"

From these strips, make 4 - 6" strip sets of 5 strips each and 4 - 7 1/2" strip sets of 5 strips each in this combination.



Make 2 - 6" strips sets of 5 strips each and 2 - 7 1/2" strip sets of 5 sets each with these fabrics.



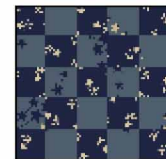
Cornerstones

From 40954-4 and 40956-1 cut 5 - 1" strips from each. Make a strip set of 5 strips alternating dark-light starting with dark and a set with light-dark starting with light. Press seams toward the dark.

Sub-cut the dark-light strip set into 27 - 1" segments.

Sub-cut the light-dark strip set into 18 - 1" segments.

Sew segments together to create nine 25-patch blocks. Press seams open.



**These strip lengths are mathematically correct. If you are more comfortable measuring and cutting the border lengths as you go, simply cut the strips now and cut them to size as you sew them on your quilt.*

Atop the Mountain

Page 4

Border 1

From 40955-2 cut:

1 – 1 ¼” strip; cut into 2 – 1 ¼” x 18 ½” strips

1 – 1 ¾” strip; cut into 2 – 1 ¾” x 20 ½” strips

Border 2

From 40949-3 cut:

2 – 1 ½” strips; cut into 2 – 1 ½” x 24 ½” strips

2 – 2” strips; cut into 2 – 2” x 22 ½” strips

Border 3

From 40955-1 cut:

2 – 1 ½” strips; cut into 2 – 1 ½” x 27 ½” strips

2 – 2” strips; cut into 2 – 2” x 24 ½” strips

Pieced Stars (Border 4)

Combo 1

From 40948-3 cut:

3 – 2 ½” strips; cut into 40 – 2 ½” squares

1 – 3 ¼” strip; cut into 10 – 3 ¼” squares

From 40951-2 cut:

2 – 3 ¼” strips; cut into 20 – 3 ¼” squares

From 40953-1 cut:

1 – 2 ½” strip; cut into 10 – 2 ½” squares

From 40954-4 cut:

1 – 3 ¼” strip; cut into 10 – 3 ¼” squares

Combo 2

From 40949-3 cut:

3 – 2 ½” strips; cut into 48 – 2 ½” squares

1 – 3 ¼” strip; cut into 12 – 3 ¼” squares

From 40950-2 cut:

2 – 3 ¼” strips; cut into 24 – 3 ¼” squares

From 40951-1 cut:

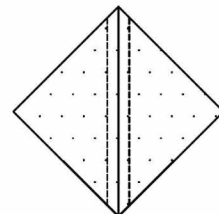
1 – 2 ½” strip; cut into 12 – 2 ½” squares

From 40952-4 cut:

1 – 3 ¼” strip; cut into 12 – 3 ¼” squares

Within each combination of fabrics, make Quarter Square Triangles from the reds for star points, light background and light blue for accent.

Draw a line diagonally on the wrong side of all your red 3 ¼” squares.
Pair half the red squares with the light blue and half with the light background.
Sew ¼” away from the drawn line on both sides.
Cut on the drawn line and press all pieces toward the red star points.

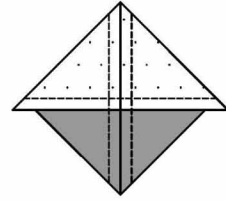


WINDHAM FABRICS

Atop the Mountain

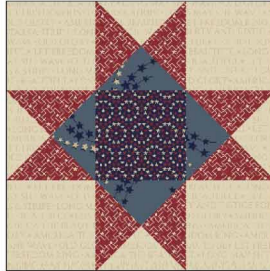
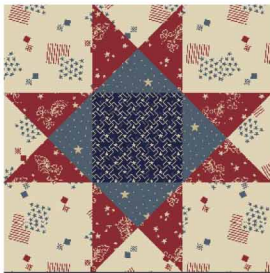
Page 5

Draw another diagonal line on the wrong side of half of the Half Square Triangles you made above, the opposite direction of your seam. Pair with a matching HST, with red fabrics on opposite halves. Sew $\frac{1}{4}$ " away from the drawn line. Cut on line and press seam to one side.



Trim finished block to $2\frac{1}{2}$ " if needed.

Construct star blocks, pressing all seams toward the solid squares. Blocks should measure $6\frac{1}{2}$ " unfinished.



Border 5

From 40948-1 cut:

4 – 2" strips

Cut into 2 – 2" x $42\frac{1}{2}$ " and 2 – 2" x $38\frac{1}{2}$ " strips

Border 6

Focus ($3\frac{1}{2}$ " squares)

From 40949-2, 40954-3 and 40950-3 cut 4 – $1\frac{1}{2}$ " strips from each.



Sew into 4 strip sets, 3 strips each.

Sub-cut strip sets into 6 – $11\frac{1}{2}$ " and 6 – $13\frac{1}{2}$ " segments

Border 7

From 40956-1 cut:

6 – $2\frac{1}{2}$ " strips; piece strips together to make length for borders.

Cut 2 – $51\frac{1}{2}$ " and 2 – $49\frac{1}{2}$ "

Binding

From 40950-2 cut 6 – $2\frac{1}{4}$ " strips

Use quilt photograph to construct quilt top. All plain borders are put on long sides first, then top and bottom.

Sew pieced sashing strips and 25-Patch corners to the focus print rectangles.



WINDHAM FABRICS

Atop the Mountain

Page 6



Add Borders 1, 2 and 3, long sides first, then top and bottom.

Piece star blocks into 2 rows of 5 blocks each and 2 rows of 6 blocks each. Arrange them according to the photo. Sew sides, then top and bottom.

Add Border 5.

Piece strip sets and fussy cut squares for Border 6.

Add Border 7.

Quilt bind and enjoy!

Be sure to visit www.windhamfabrics.com to see the complete collection
and to download other Free Projects



WINDHAM FABRICS