

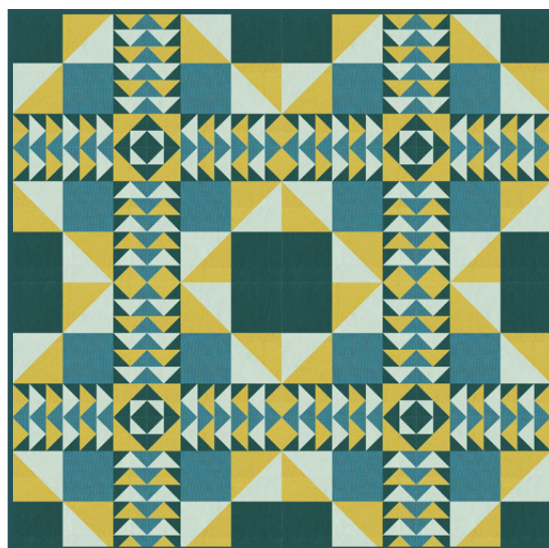
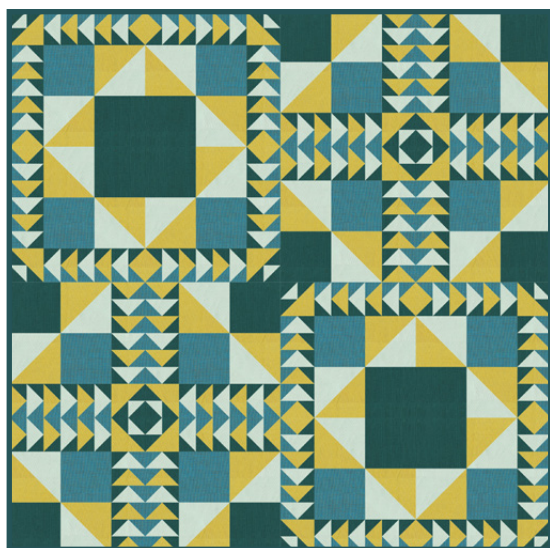
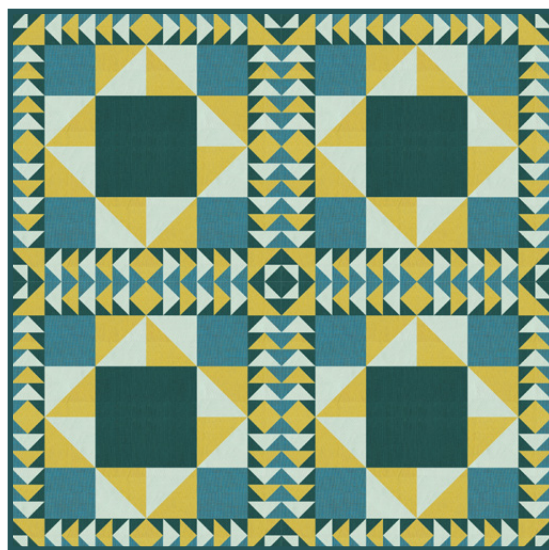
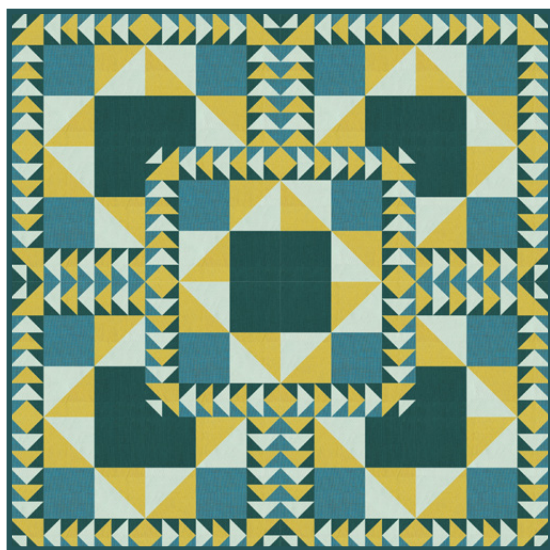
INTERMEDIATE
SKILL

Lead the Way

designed by Natalie Crabtree

featuring Artisan Cotton fabrics by Another Point of View

SIZE: 48" x 48"

*one block, many possibilities!*FREE
PROJECT



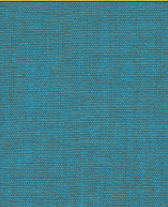

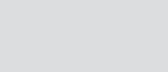
THIS IS A DIGITAL REPRESENTATION OF FOUR OPTIONS FOR THE FINAL QUILT TOP, FABRIC MAY VARY.

PLEASE NOTE: BEFORE MAKING YOUR PROJECT, CHECK FOR ANY PATTERN UPDATES AT [WINDHAMFABRICS.COM](https://www.windhamfabrics.com)'S FREE PROJECTS SECTION.



Lead the Way

PLEASE NOTE: FABRIC YARDAGES BELOW ARE FOR (1) QUILT TOP.

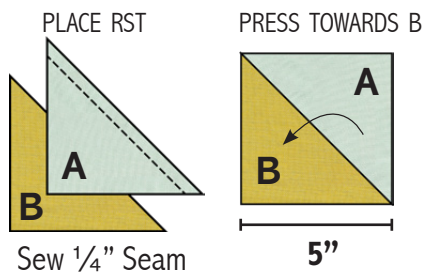
KEY	FABRIC	SKU	YD	CUTTING INSTRUCTIONS
A		40171-59 White Aqua	1-1/4	(3) 5 1/2" x WOF strips. Subcut (16) 5 1/2" squares; cut each square once diagonally for (32) HST. (1) 2 1/2" x WOF strip. Subcut (8) 2 1/2" squares; cut each square once diagonally for (16) HST. (8) 2" x WOF strips. Subcut (96) 2" x 3 1/2" rectangles.
B		40171-42 Yellow Grey	1-1/4	(3) 5 1/2" x WOF strips. Subcut (16) 5 1/2" squares; cut each square once diagonally for (32) HST. (1) 3 7/8" x WOF strip. Subcut (8) 3 7/8" squares; cut each square once diagonally for (16) HST. (8) 2" x WOF strips. Subcut (96) 2" x 3 1/2" rectangles.
C		40171-31 Turquoise Copper	1-1/8	(2) 5" x WOF strips. Subcut (16) 5" squares. (10) 2" x WOF strips. Subcut (192) 2" squares; draw a diagonal line on the wrong side of each square.
D		40171-64 Teal Turquoise	1-2/3	(2) 5" x WOF strips. Subcut (16) 5" squares. (10) 2" x WOF strips. Subcut (192) 2" squares; draw a diagonal line on the wrong side of each square. (1) 2 1/2" x WOF strip. Subcut (8) 2 1/2" squares; cut each square once diagonally for (16) HST. (1) 2 3/8" x WOF strip. Subcut (16) 2 3/8" squares; cut each square once diagonally for (32) HST. (6) 2 1/4" x WOF strips for binding.
		Backing	3-1/8	Batting 54" x 54"

PROJECT DISCLAIMER: Every effort has been made to ensure that all projects are error free. All the information is presented in good faith, however, no warranty can be given nor results guaranteed. Therefore, we assume no responsibility nor damages that may occur when referring to this pattern. When errors are brought to our attention, we make every effort to correct and post a revision as soon as possible. We suggest you check windhamfabrics.com for pattern updates and to test the pattern prior to making the project. Test templates first, before cutting all the pieces. Free projects are not for resale.

WOF= Width of Fabric | HST = Half Square Triangle



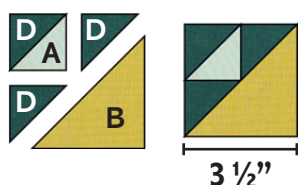
Lead the Way



1. HST UNITS: Sew the longest edges of (1) **A** and (1) **B** 5 1/2" triangles, right sides together, as shown. Press towards **B**. Square HST to 5" unfinished. Make (32) **AB** HST units.

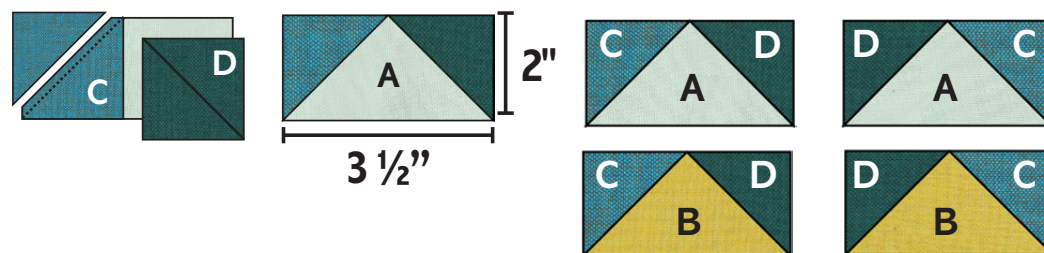


2. Repeat HST unit assembly using (1) **A** and (1) **D** 2 1/2" triangles. Square to 2" unfinished. Make (16) **AD** HST units.

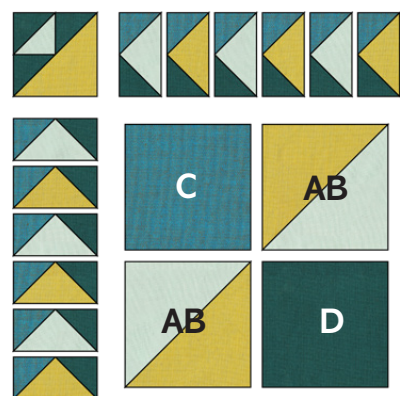


3. Corner Block Units: Use (1) **AD** HST unit, (2) **D** 2 3/8" triangles and (1) **B** 3 7/8" triangle to complete corner unit as shown. Square to 3 1/2" unfinished. Make (16) Corner Block Units.

4. Flying Geese Units: Use **C** and **D** 2" squares and **A** and **B** 2" x 3 1/2" rectangles to make flying geese as shown. Note there are (4) colorways. Refer to diagrams for proper placement of fabrics. Trim flying geese units to 2" x 3 1/2" unfinished. Make (48) of each colorway.



Make 48 of each



5. Block Assembly: Sew together steps 1-4 units and (1) **C** and (1) **D** 5" square to make block. Please note orientation and placement of the HST and flying geese units. Square block to 12 1/2" unfinished.



Make 16 Blocks



Lead the Way

QUILT ASSEMBLY Quilt top is assembled in a 4 x 4 grid.

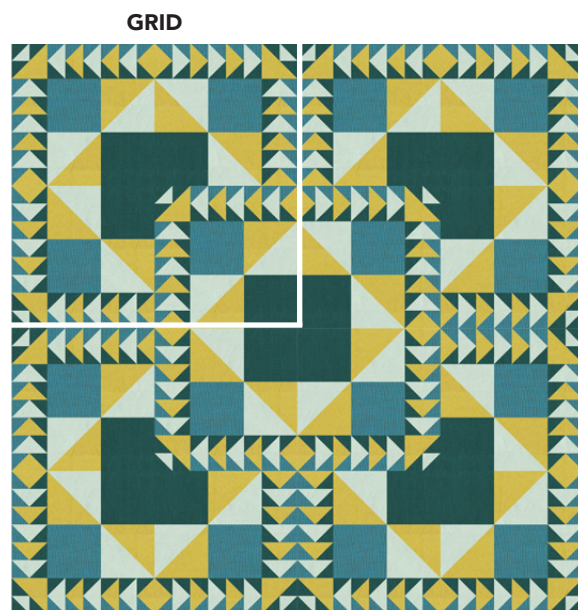
Take your quilt to the next level by using the blocks to your advantage. Create secondary quilt patterns by turning blocks in different directions. *The creative design possibilities are endless!*

FOUR QUILT TOP OPTIONS ARE SHOWN BELOW:

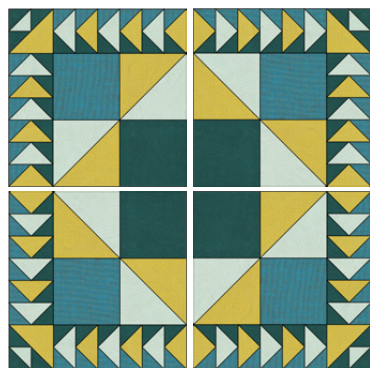
Stacked Blocks: Use the negative space created with the **D** squares for free motion quilting!



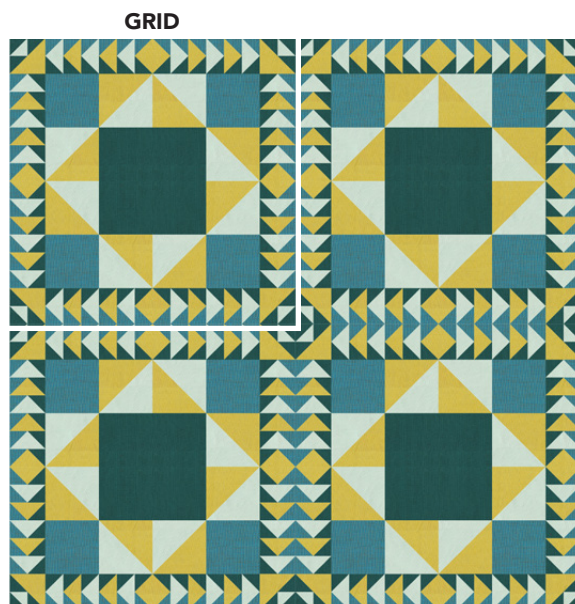
ORIENTATION OF BLOCKS PER GRID



Four Quadrant: Draw the eye into each quadrant with unique and custom quilting in each quadrant. Flying geese circle around the quilt blocks like a border.



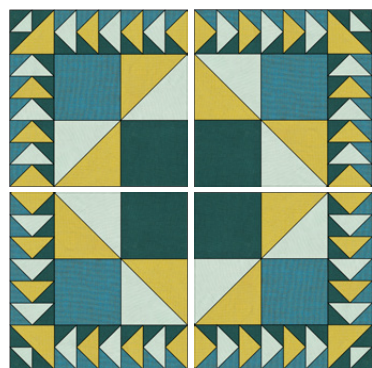
ORIENTATION OF BLOCKS PER GRID





Lead the Way

Geometric Block: Blocks are turned to create unique quadrants. These could be viewed as plus signs and O's, or even X's and O's!



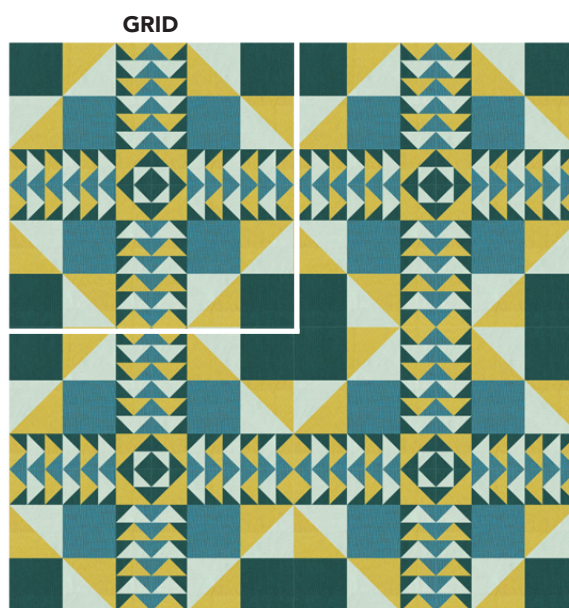
ORIENTATION OF BLOCKS PER GRID



Southwest Vibe: Have the flying geese point North, South, East and West. Secondary flying geese created using fabric **C** really stand out.



ORIENTATION OF BLOCKS PER GRID



FINISHING: Layer quilt top, batting and backing together to form quilt sandwich. Baste and quilt as desired. Bind using **D** 2-1/4" strips.