

Java Joe's

designed by Christine Stainbrook
featuring *Dark Roast* by Whistler studios

SIZE: 60-1/2" x 60-1/2"

FREE
PROJECT



THIS IS A DIGITAL REPRESENTATION OF THE QUILT TOP, FABRIC MAY VARY.

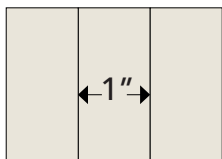
PLEASE NOTE: BEFORE MAKING YOUR PROJECT, CHECK FOR ANY PATTERN UPDATES AT WINDHAMFABRICS.COM'S FREE PROJECTS SECTION.



Java Joe's

PLEASE READ PATTERN FULLY BEFORE BEGINNING YOUR PROJECT.

KEY	FABRIC	SKU	YD	CUTTING INSTRUCTIONS
A		50087-41 Cloud	1	(1) 3-1/2" x WOF strip. Subcut: (4) 3-1/2" squares and (4) 3-1/2" x 6-1/2" strips. (1) 3-7/8" x WOF strip. Subcut: (8) 3-7/8" squares, cut once diagonally. (4) 2-1/2" x WOF strips. Subcut: (2) 2-1/2" x 24-1/2" and (2) 2-1/2" x 28-1/2" strips.
B		51177-6 Grey	3/8	(1) 5-1/4" x WOF strip. Subcut: (1) 5-1/4" square, cut twice diagonally. (4) 3-1/2" squares.
C		51178-2 Mocha	3/8	(1) 6-7/8" x WOF strip. Subcut: (4) 6-7/8" squares, cut once diagonally.
D		51174-2 Mocha	1-3/8	(12) Template 3. (1) 12-1/2" square.
E		50087-65 Nutmeg	1	(1) 3-7/8" x WOF strip. Subcut: (4) 3-7/8" squares. (2) 3-1/2" x WOF strips. Subcut: (8) 3-1/2" squares. (3) 3" x WOF strips. Subcut: (32) 3" squares. (1) 1-3/4" x WOF strip. Subcut: (16) 1-3/4" squares. (1) 3" x WOF strip. Subcut: (16) 1-3/4" x 3" strips.
F		50087-8 Espresso	1/8	(4) 1-1/2" x WOF strips. Subcut: (2) 1-1/2" x 28-1/2" and (2) 1-1/2" x 30-1/2" strips. (12) Template 2.
G		51175-2 Mocha	3/8	(12) Template 1.
H		51178-3 Cream	1-3/4	(2) 3" x WOF strips. Subcut: (16) 3" squares. (3) 3" x WOF strips. Subcut: (16) 3" x 5-1/2" strips. (12) Template 4.
I		51176-2 Mocha	2	(1) 3" x WOF strip. Subcut: (4) 3" squares. (2) 1-3/4" x WOF strips. Subcut: (32) 1-3/4" squares. (6) 4-1/2" x WOF. Sew strips via short ends. (7) 2-1/2" x WOF for binding. Sew strips via short ends.
J		51178-1 Espresso	1/2	(6) 1-1/2" x WOF strips. Sew strips via short ends.
		Backing	4	Batting 68" x 68"



TIP: ADJUSTING YOUR NEEDLE POSITION TO A 1/4" SEAM.

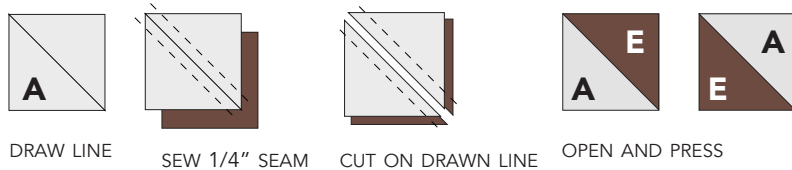
Sew (3) 1-1/2" x 3" strips of scrap fabric via long edge, using what you believe is a 1/4" seam on your machine. Press away and measure the center piece, it should be exactly 1" wide. If the center is less than 1", the seam is too large, adjust the needle to the right. If the center is more than 1", the seam is too small, adjust the needle to the left. *CONSULT YOUR MACHINE'S MANUAL ON MOVING NEEDLE POSITION.* Repeat step until center strip is 1" wide.



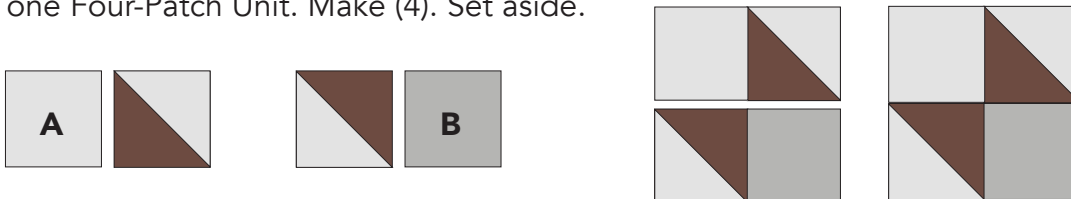
Java Joe's

CENTER BLOCK ASSEMBLY

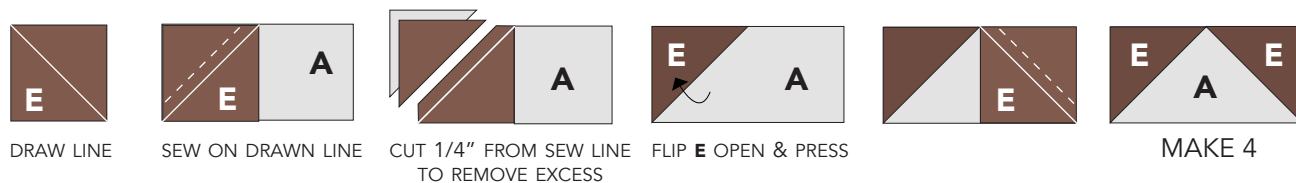
1. Half Square Triangle Units: Take (1) **A** 3-7/8" square and draw a diagonal line on wrong side, then place it right sides together with (1) **E** 3-7/8" square. Sew a 1/4" seam on both sides of drawn line. Cut along drawn line to yield (2) HST units, open and press. Make (8) units. Set aside.



2. Four-Patch Corner Units: Sew (1) **A** 3-1/2" square to (1) **AE** HST unit and (1) **B** 3-1/2" square to (1) **AE** HST unit. *Note proper rotation and placement of HST units.* Sew units together to make one Four-Patch Unit. Make (4). Set aside.

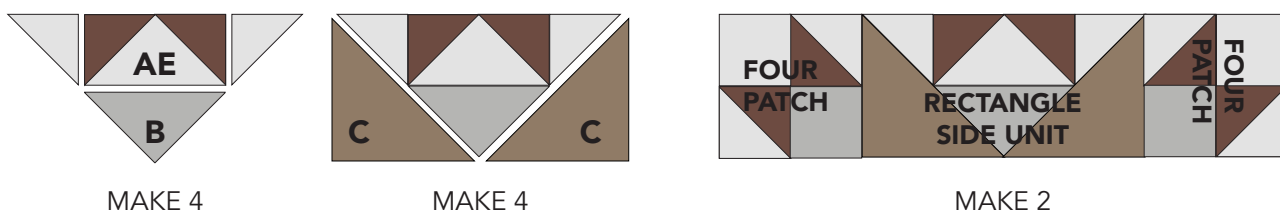


3. Flying Geese Units: Take (1) **E** 3-1/2" square and draw a diagonal line on wrong side. Place it right sides together on one end of (1) **A** 3-1/2" x 6-1/2" rectangle. Sew on drawn line. Cut a 1/4" seam from sew line to remove excess. Press **E** triangle outward. Repeat for remaining corner. Trim unit to 3-1/2" x 6-1/2". Make (4) **AE** Flying Geese Units.



4. Rectangle Side Units: Sew (1) **B** 5-1/4" triangle to the bottom of (1) **AE** Flying Geese Unit. Sew (1) **A** 3-7/8" triangle to each end of **AEB** unit. Sew (2) **C** 5-1/4" triangles to each side. Trim unit to 6-1/2" x 12-1/2". Make (4) Rectangle Side Units.

5. Sew (1) Four-Patch Unit to ends of (1) Rectangle Side Unit. Make 2. *Note proper rotation of Four-patch Units.* Set aside.

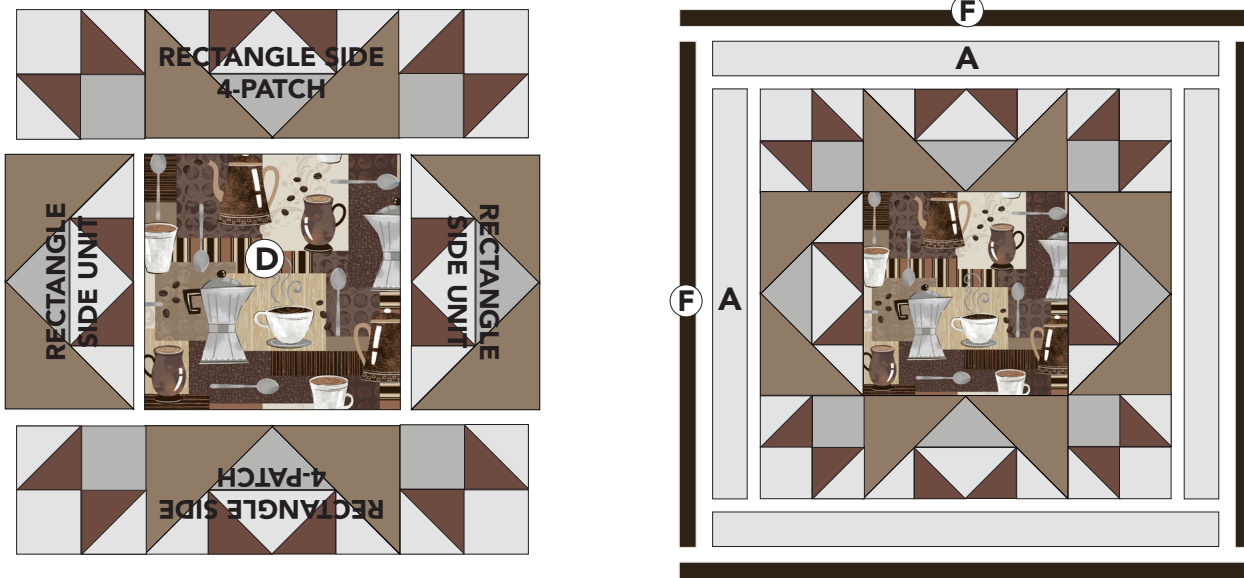




Java Joe's

6. Center Block: Sew (1) Rectangle Side Unit to sides of (1) **D** 12-1/2" square as shown diagram. Then sew (1) Four-Patch/Rectangle Side Unit to top and to bottom of Center Row. *Note proper rotation of units.* Square Center Block to 24-1/2".

7. Sew (1) **A** 2-1/2" x 24-1/2" strip to the left and right side of Center Block. Sew (1) **A** 2-1/2" x 28-1/2" strip to top and bottom. Follow with (1) **F** 1-1/2" x 28-1/2" strip to left and right side of Center Block and (1) **F** 1-1/2" x 30-1/2" strip to top and bottom. Square Center Block to 30-1/2".

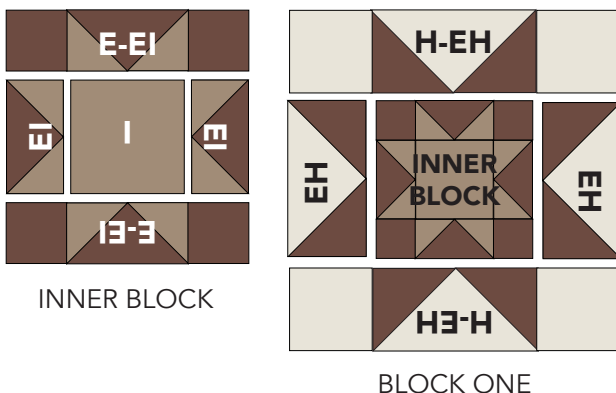


CENTER BLOCK

BLOCK ONE ASSEMBLY

8. EI Units: Similar to Step 3. Flying Geese Unit assembly make (12) **EI** units, using **I** 1-3/4" squares and **E** 1-3/4" x 3" rectangles. Sew (1) **I** 1-3/4" square to ends of (8) **EI** flying geese unit.

9. EH Units: Make (12) **EH** flying geese units, using **E** 3" squares and **H** 3" x 5-1/2" rectangles. Sew (1) **H** 3" square to ends of (8) **EH** flying geese units.



10. Inner Block: Sew **EI** flying geese units and **E-EI** units to **I** 3" square as shown in diagram. *Note proper rotation of units.* Square to 5-1/2". Make (4) Inner Blocks.

11. Block One: Sew **EH** flying geese units and **H-EH** units to Inner Block as shown in diagram. *Note proper rotation of units.* Square to 10-1/2". Make (4) Block Ones.



Java Joe's

BLOCK TWO ASSEMBLY



BLOCK TWO

4H

3D

2F

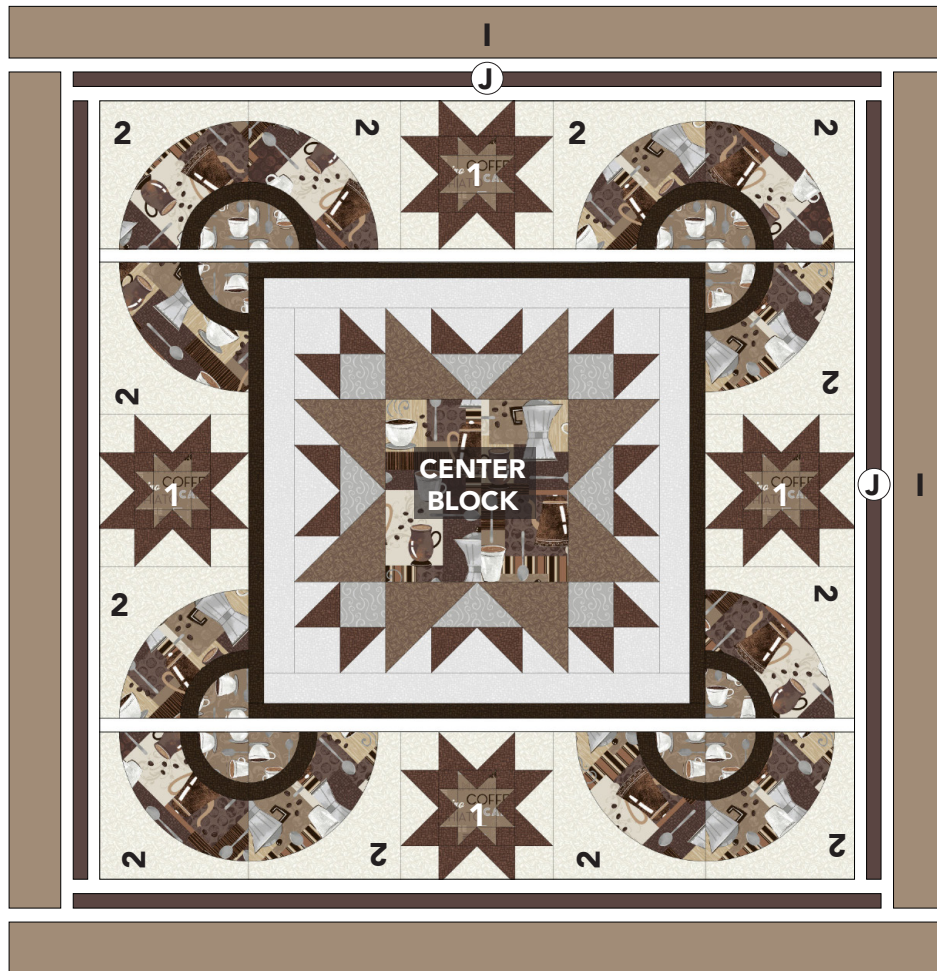
1G

For Block Two assembly, refer to your favorite quilting source to piece curved templates. Use your preferred method.

12. Sew Templates **1G**, **2F**, **3D** and **4H** together as shown in diagram below. Square block to 10-1/2". Make 12 Block Twos.

QUILT TOP ASSEMBLY

Take Center Block, Blocks One and Blocks Two to make quilt top as shown in diagram below. Begin with side units and then add top and bottom units. *Note proper rotation of Block Two.*



13. J Border: Sew (1) **J** 1-1/2" x 50-1/2" strip to side of quilt top. Sew (1) **J** 1-1/2" x 52-1/2" strip to top and to bottom of quilt top.

14. I Border: *Refer to your favorite quilting source for mitered corners.*

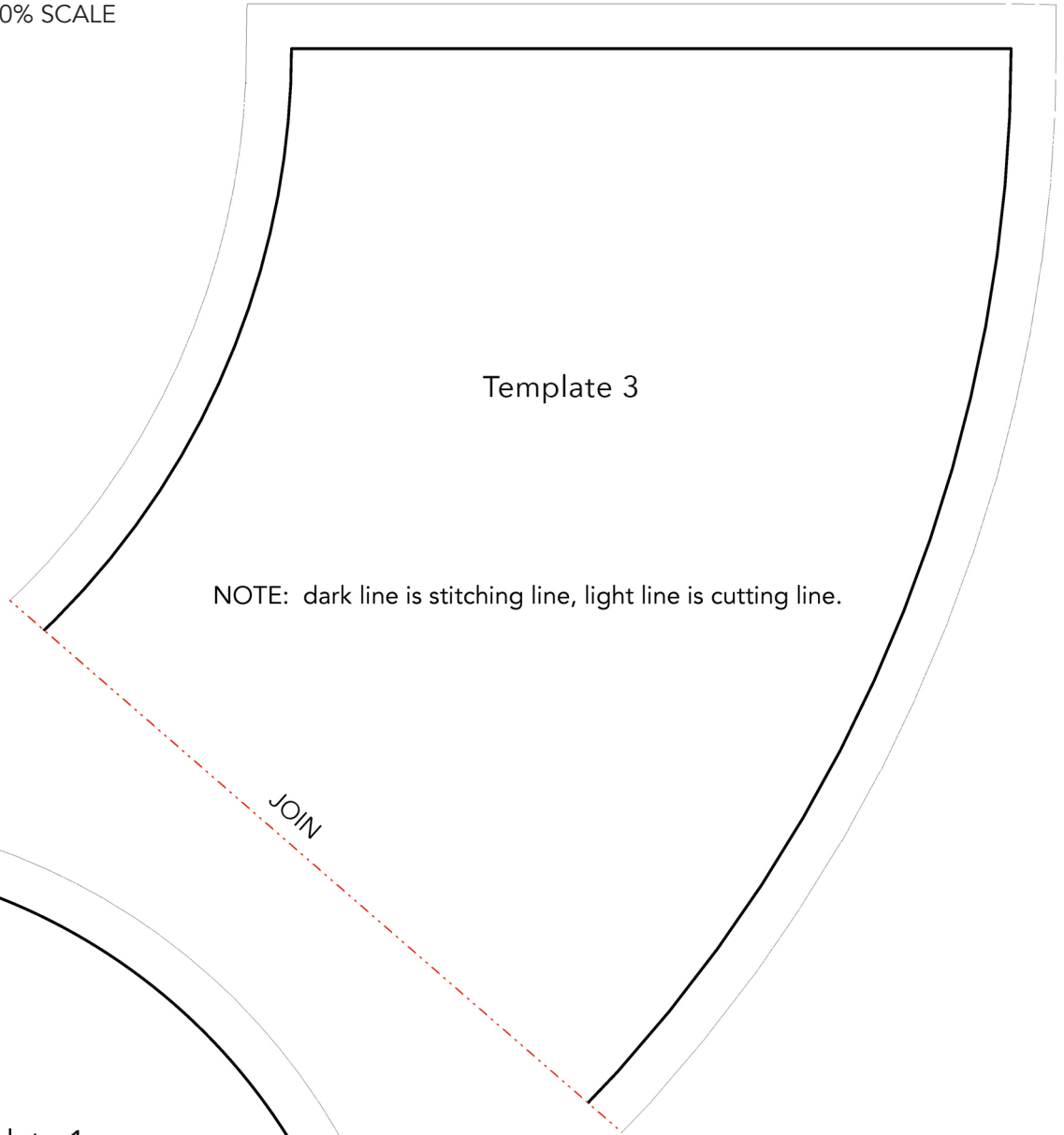
Cut (4) **I** 4-1/2" x 61-1/4" strips. Trim ends diagonally. Sew strips to the edges of the quilt, beginning and ending stitching 1/4" from edges of **J** inner border. Stitch diagonal ends together. *Note proper rotation of I fabric.*

FINISHING: Layer quilt top, batting and backing together to form quilt sandwich. Baste and quilt as desired. Bind using **I** 2-1/2" strips.



Java Joe's

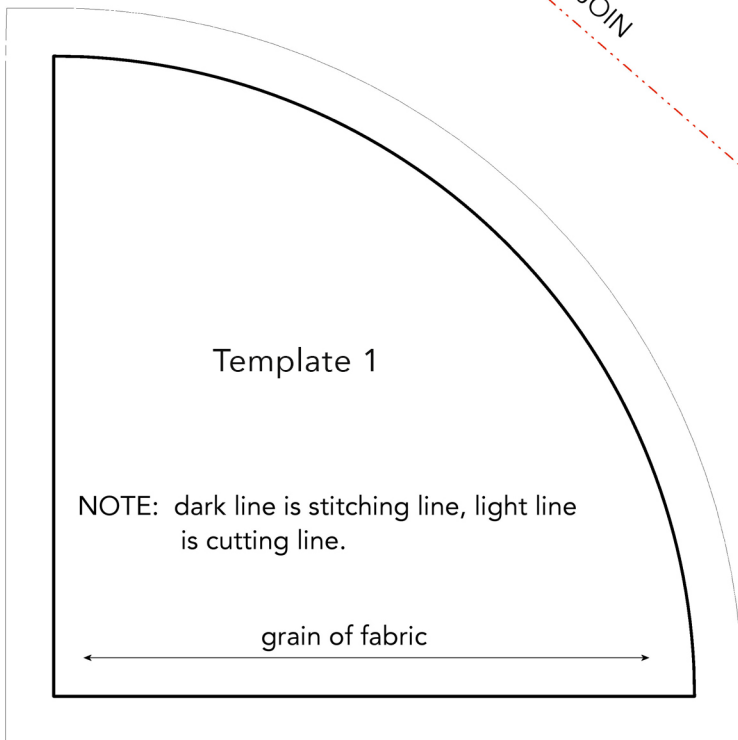
PRINT TEMPLATES AT 100% SCALE



Template 3

NOTE: dark line is stitching line, light line is cutting line.

JOIN



Template 1

NOTE: dark line is stitching line, light line is cutting line.

grain of fabric





Java Joe's

PRINT TEMPLATES AT 100% SCALE

Template 2

NOTE: dark line is stitching line, light line is cutting line.

grain of fabric

JOIN

Template 3

grain of fabric

1"



Java Joe's

PRINT TEMPLATES AT 100% SCALE

