

Galileo

Design and Pattern by Heidi Pridemore
Featuring the Starlight Collection by Whistler Studios
Size: 57" x 69"



Check www.windhamfabrics.com Free Project section to see if there are any pattern updates before you start your quilt project



812 Jersey Ave – Jersey City, NJ 07310 – 201.659.0444 ~ FAX: 201.659.9719
www.windhamfabrics.com email: retail@windhamfabrics.com

Galileo

Page 2

Estimated Fabric Requirements:

1 panel – 42559-X Multi
 $\frac{3}{8}$ yard – 42563-1 Red
 $\frac{2}{3}$ yard – 42561-2 Gold
 $\frac{3}{4}$ yard – 42564-4 Navy
 $\frac{1}{4}$ yard – 42562-4 Navy
 $\frac{3}{8}$ yard – 42563-4 Navy
 $\frac{1}{3}$ yard – 42560-1 Red
 $\frac{1}{3}$ yard – 42561-4 Navy
1 yard – 42564-3 Cream
1 yard – 42564-1 Red
1 yard – 42560-3 Cream
3 $\frac{3}{4}$ yards – (Your Choice)



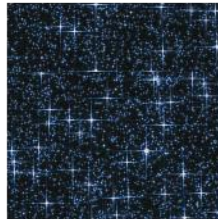
42559-X Multi



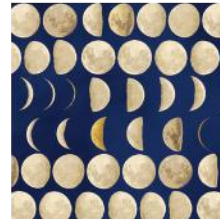
42563-1 Red



42561-2 Gold



42564-4 Navy



42562-4 Navy



42563-4 Navy



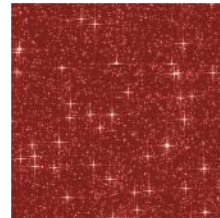
42560-1 Red



42561-4 Navy



42564-3 Cream



42564-1 Red



42560-3 Cream

Cutting Instructions:

Fabric A: Globe – Multi

- Fussy cut four globes, each 12" square.

Fabric B: Bias Stripe – Red

- Cut two 2 $\frac{1}{2}$ " x WOF strips. Sub-cut the strips into four 2 $\frac{1}{2}$ ' x 12" strips.
- Cut two 2 $\frac{1}{2}$ " x WOF strips. Sub-cut the strips into four 2 $\frac{1}{2}$ " x 16" strips.

Fabric C: Suns – Gold

- Cut two 3 $\frac{1}{2}$ " x WOF strips. Sub-cut the strips into four 3 $\frac{1}{2}$ " x 14 $\frac{1}{2}$ " strips.
- Cut two 3 $\frac{1}{2}$ " x WOF strips. Sub-cut the strips into four 3 $\frac{1}{2}$ " x 20 $\frac{1}{2}$ " strips.
- Cut one 2 $\frac{1}{2}$ " x WOF strip. Sub-cut the strip into two 2 $\frac{1}{2}$ " x 15 $\frac{1}{2}$ " strips.
- Cut one 2 $\frac{1}{2}$ " x WOF strip. Sub-cut the strip into two 2 $\frac{1}{2}$ " x 17 $\frac{1}{2}$ " strips.



WINDHAM FABRICS

www.windhamfabrics.com

Galileo

Page 3

Cutting Instructions - Continued:

Fabric D: Starlight – Navy

- Cut two 10 ½" x WOF strips. Sub-cut the strips into eight 10 ½" squares.

Fabric E: Moons – Navy

- Cut one 2 ½" x WOF strip. Sub-cut the strip into two 2 ½" x 20 ½" strips.
- Cut one 2 ½" x WOF strip. Sub-cut the strip into two 2 ½" x 18 ½" strips.

Fabric F: Bias Stripe – Navy

- Cut two 2 ½" x WOF strips. Sub-cut the strips into four 2 ½" x 12" strips.
- Cut two 2 ½" x WOF strips. Sub-cut the strips into four 2 ½" x 16" strips.

Fabric G: Instruments – Red

- Cut two 4 ½" x WOF strips. Sub-cut the strips into seventeen 4 ½" squares.

Fabric H: Suns – Navy

- Cut two 4 ½" x WOF strips. Sub-cut the strips into eighteen 4 ½" squares.

Fabric I: Starlight – Cream

- Cut seven 1 ½" x WOF strips. Sew the strips together end to end with diagonal seams and cut six 1 ½" x 46 ½" strips.
- Cut two 1 ½" x WOF strips. Sub-cut the strips into four 1 ½" x 20 ½" strips.
- Cut five 1 ½" x WOF strips. Sub-cut the strips thirty-eight 1 ½" x 4 ½" strips.
- Cut one 1 ½" x WOF strip. Sub-cut the strip into two 1 ½" x 14 ½" strips.
- Cut one 1 ½" x WOF strip. Sub-cut the strip into two 1 ½" x 18 ½" strips.
- Cut one 1 ½" x WOF strip. Sub-cut the strip into two 1 ½" x 15 ½" strips.
- Cut one 1 ½" x WOF strip. Sub-cut the strip into two 1 ½" x 17 ½" strips.

Fabric J: Starlight – Red

- Cut three 2" x WOF strips. Sew the strips together end to end with diagonal seams and cut two 2" x 58 ½" strips.
- Cut three 2" x WOF strips. Sew the strips together end to end with diagonal seams and cut two 2" x 49 ½" strips.
- Cut seven 2 ½" x WOF strips for the binding.

Fabric K: Instruments – Cream

- Cut four 4 ½" x WOF strips. Sew the strips together end to end with diagonal seams and cut two 4 ½" x 61 ½" strips.
- Cut three 4 ½" x WOF strips. Sew the strips together end to end with diagonal seams and cut two 4 ½" x 57 ½" strips.

Backing: *(Your Choice)*

- Cut two 65" x WOF strips. Sew the strips together and trim to 65" x 77" for the back.



WINDHAM FABRICS

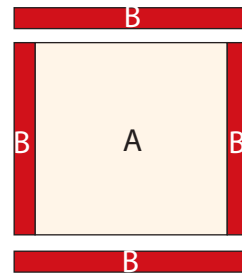
www.windhamfabrics.com

Galileo

Page 4

Block Assembly:

1. Sew one 2 ½" x 12" Fabric B strip to each side of one 12" Fabric A square. Sew one 2 ½" x 16" Fabric B strip to the top and to the bottom of the Fabric A square. Trim the block to measure 14 ½" square to make one AB block (Fig. 1). Repeat to make a second AB block.



Trim block to measure 14 ½" x 14 ½" after the borders are added

Fig. 1

2. Sew one 3 ½" x 14 ½" Fabric C strip to each side of one AB block. Sew one 3 ½" x 20 ½" Fabric C strip to the top and to the bottom of the AB block to make one ABC block (Fig. 2). Repeat to make a second ABC block.
3. Place one 10 ½" Fabric D square on the top left corner of one ABC block, right sides together (Fig. 3). Sew across the diagonal of the small square from the upper right corner to the lower left corner (Fig. 3). Flip open the triangle formed and press (Fig. 4). Trim away the excess fabric from behind the triangle ¼" away from the sewn seam.

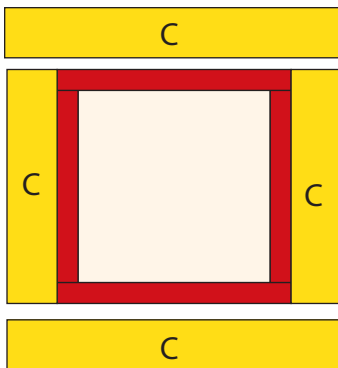


Fig. 2

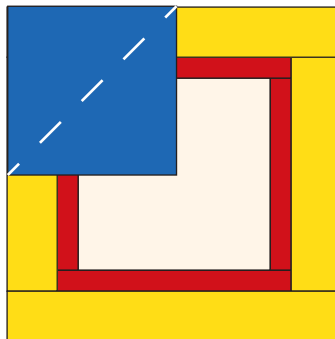


Fig. 3

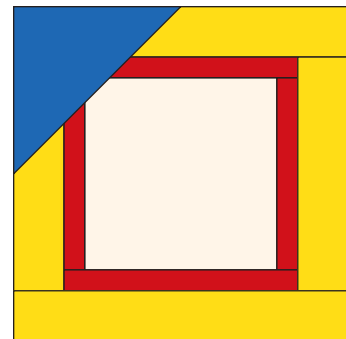


Fig. 4

4. Follow Figure 5 for the seam direction to add a 10 ½" Fabric D square to each of the remaining corners of the ABC block to make one Block One (Fig. 6).
5. Repeat Steps 3-4 to make a second Block One.

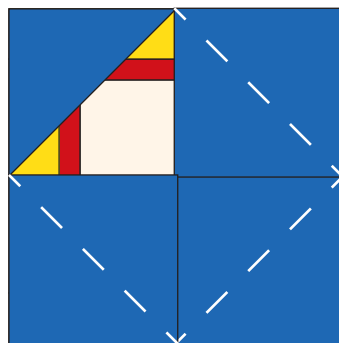


Fig. 5

Block One
make 2

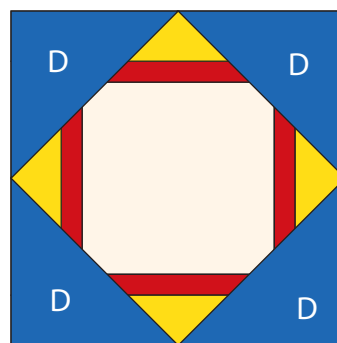


Fig. 6



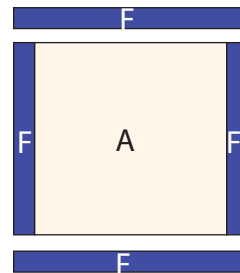
WINDHAM FABRICS

www.windhamfabrics.com

Galileo

Page 5

6. Sew one 2 ½" x 12" Fabric F strip to each side of one 12" Fabric A square. Sew one 2 ½" x 16" Fabric F to the top and to the bottom of the Fabric A square. Trim the block to measure 14 ½" square to make one AF block (Fig. 7). Repeat to make a second AF block.



Trim block to measure 14 ½" x 14 ½" after the borders are added

Fig. 7

7. Sew one 1 ½" x 14 ½" Fabric I strip to the right side of one AF block. Sew one 1 ½" x 15 ½" Fabric I strip to the top of the AF block (Fig. 8).
8. Sew one 2 ½" x 15 ½" Fabric C strip to the right side of the AF block. Sew one 2 ½" x 17 ½" Fabric C strip to the top of the AF block (Fig. 9).

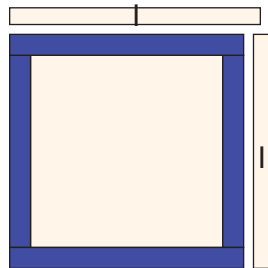


Fig. 8

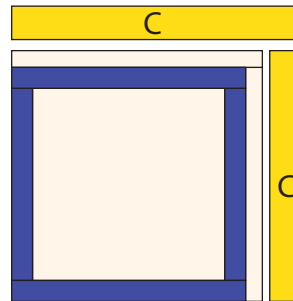


Fig. 9

9. Sew one 1 ½" x 17 ½" Fabric I strip to the right side of one AF block. Sew one 1 ½" x 18 ½" Fabric I strip to the top of the AF block (Fig. 10).
10. Sew one 2 ½" x 18 ½" Fabric E strip to the right side of the AF block. Sew one 2 ½" x 20 ½" Fabric E strip to the top of the AF block to make one Block Two (Fig. 11).
11. Repeat Steps 7-10 to make a second Block Two.

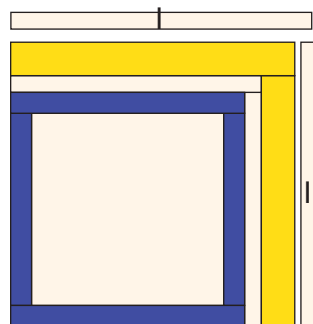


Fig. 10

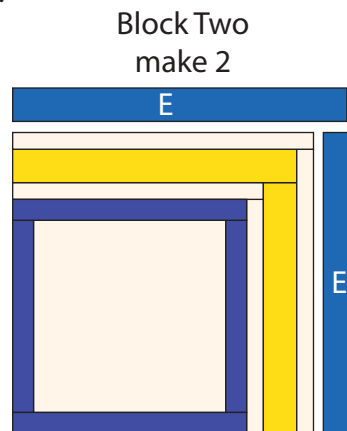


Fig. 11



WINDHAM FABRICS

www.windhamfabrics.com

Galileo

Page 6

12. Sew four 1 ½" x 4 ½" Fabric I strips, two 4 ½" Fabric G squares and two 4 ½" Fabric H squares together. Sew one 1 ½" x 20 ½" Fabric I strip to the top and to the bottom of the resulting strip to make one Short Sashing strip (Fig. 12). Repeat to make a second Short Sashing strip.

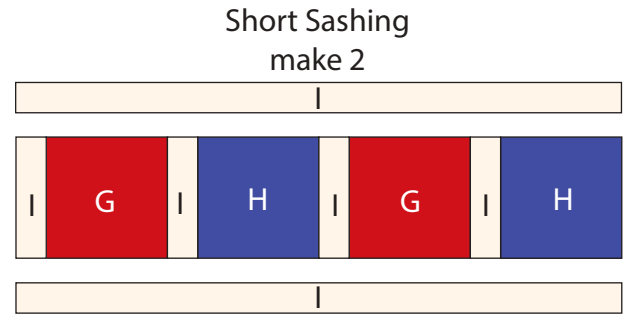


Fig. 12

13. Sew ten 1 ½" x 4 ½" Fabric I strips, five 4 ½" Fabric H squares and four 4 ½" Fabric G squares together. Sew one 1 ½" x 46 ½" Fabric I to the top and to the bottom of the resulting strip to make one Long Sashing 1 strip (Fig. 13). Repeat to make a second Long Sashing 1 strip.

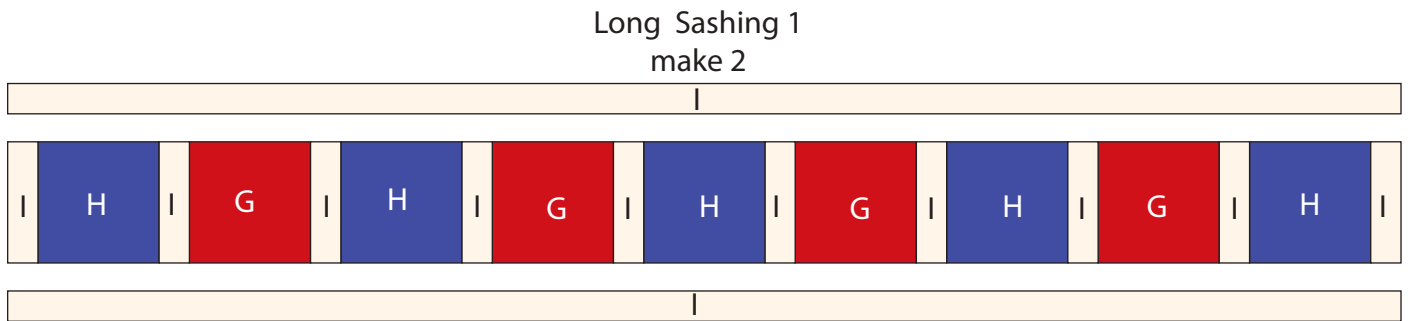


Fig. 13

14. Sew ten 1 ½" x 4 ½" Fabric I strips, five 4 ½" Fabric G squares and four 4 ½" Fabric H squares together. Sew one 1 ½" x 46 ½" Fabric I to the top and to the bottom of the resulting strip to make one Long Sashing 2 strip (Fig. 14).

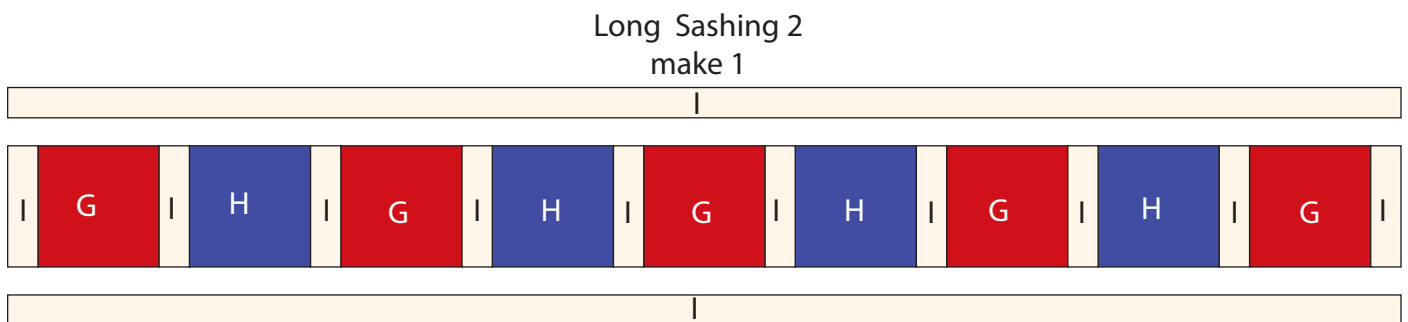


Fig. 14

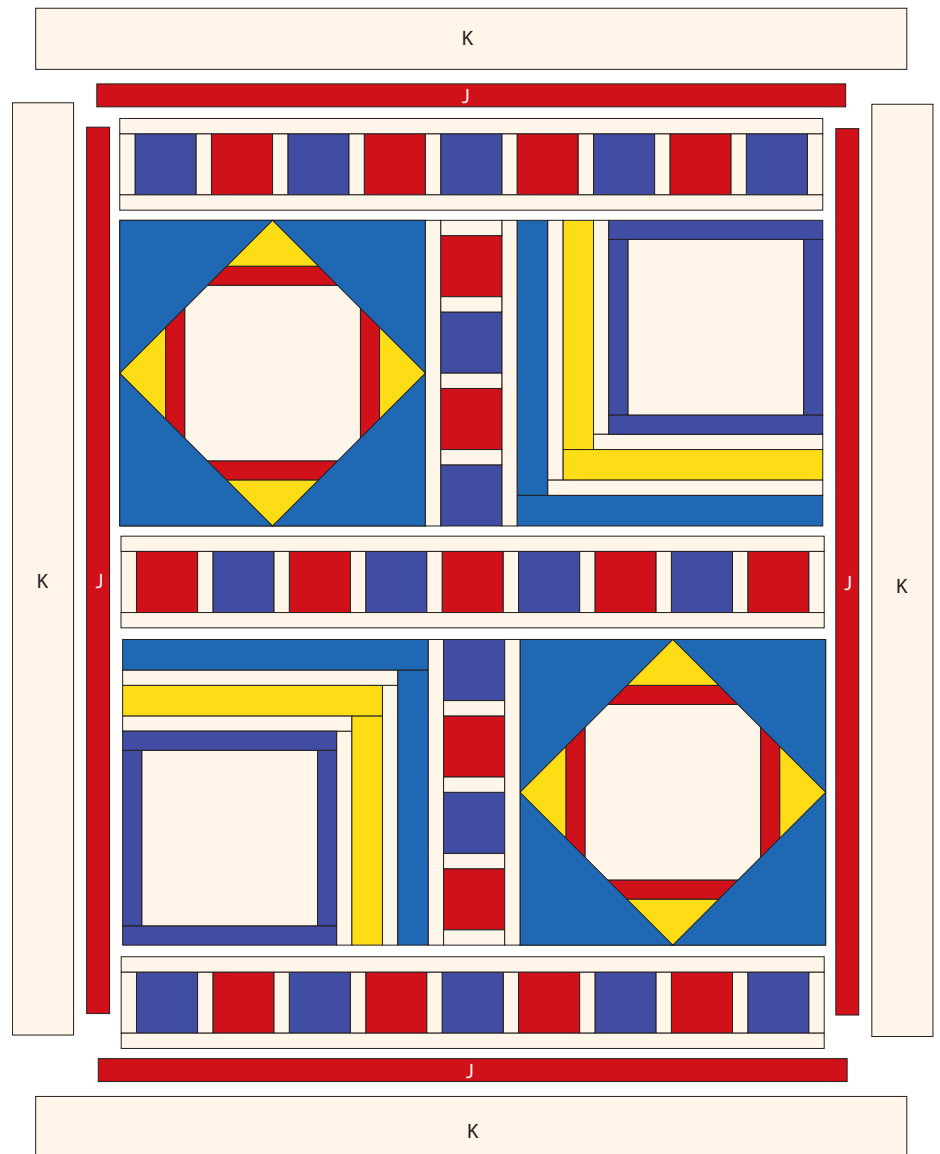
Quilt Assembly – Refer to the Quilt Layouts while assembling the quilt top:

15. Sew one Block One, one Short Sashing strip and one Block Two together, in that order, to make Row One.
16. Sew one Block Two, one Short Sashing strip and one Block One together, in that order, to make Row Two.

Galileo

Page 7

17. Sew one Long Sashing Strip 1, one Row One, one Long Sashing Strip 2, Row Two and one Long Sashing Strip 1 together, in that order, to make the quilt top.
18. Sew one 2" x 58 1/2" Fabric J strip to each side of the quilt top. Sew one 2" x 49 1/2" Fabric J strip to the top and to the bottom of the quilt top.
19. Sew one 4 1/2" x 61 1/2" Fabric K strip to each side of the quilt top. Sew one 4 1/2" x 57 1/2" Fabric K strip to the top and to the bottom of the quilt top.
20. Layer and quilt as desired.
21. Sew the seven 2 1/2" x WOF Fabric J strips together, end to end with 45-degree seams, to make the binding. Fold this long strip in half, lengthwise with wrong sides together, and press.
22. Bind as desired.



Quilt Layout

**Be sure to visit www.windhamfabrics.com to see the complete collection
and to download this and other FREE Projects**



WINDHAM FABRICS

www.windhamfabrics.com