

# Forest Clearings

Designed by Whistler Studios

Featuring the Forest Parade Collection by Petit Collage

Size: 5 1/4" cube



Check [www.windhamfabrics.com](http://www.windhamfabrics.com) Free Project section to see if there are any pattern updates before you start your quilt project

**WINDHAM FABRICS**

812 Jersey Ave ~ Jersey City, NJ 07310 ~ 201.659.0444 ~ FAX: 201.659.9719  
[www.windhamfabrics.com](http://www.windhamfabrics.com) email: [retail@windhamfabrics.com](mailto:retail@windhamfabrics.com)

# Forest Clearings

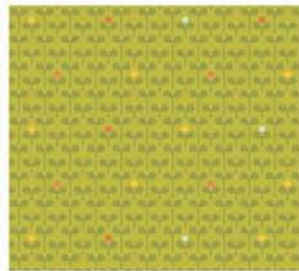
Page 2



40104-X Multi



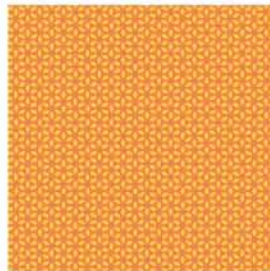
40106-X Multi



40109-3 Green



40110-2 Blue



40110-4 Orange



40110-6 Red

These blocks are pretty easy to make and are a really great handmade baby gift.

## Fabric Requirements:

Instructions are for 7 Blocks

4 Rows of Blocks (about 2/3 yard) 40104-X Multi

Fat Quarter each:

40106-X Multi, 40109-3 Green, 40109-5 Yellow  
40110-2 Blue, 40110-4 Orange, 40110-6 Red

Some kind of stuffing like polyester Fiberfill

## Cutting:

40104-X Multi - animal portraits:

Cut (28) 5 3/4" x 5 3/4" squares using all the different animals. You should center your animal block from side to side and top to bottom to make sure your animals are perfectly in the middle. Each block varies slightly in size.

From Fat Quarter Prints:

Cut (14) 3/4" x 5 3/4" squares from assorted patterns making sure to have a pair of matching prints for the top and bottom of each of the (7) blocks.

Each block will use (4) animal blocks and (2) print blocks.

# Forest Clearings

Page 3

## Assembly:

1. Take animal square A and with right sides together, place it on top of animal square B. Machine stitch down one side. Flatten and press seam open. Take animal square C and with right sides together, match the side seam of animal square B. Flatten and press seam open. Repeat until you have (4) squares sewn together. Diagram 1

Diagram 1



Side A

Side B

Side C

Side D

2. Sew the side D to side A to close the final side. You will have formed the sides of the cube block once all four seams are sewn. Diagram 2

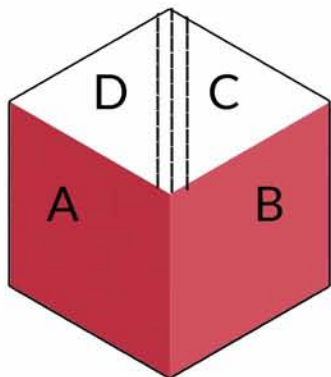


Diagram 2

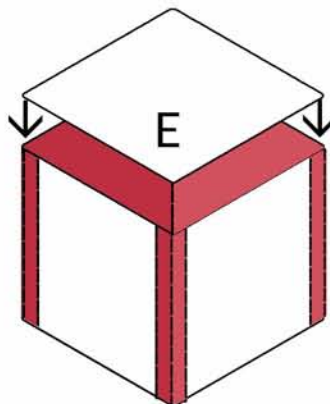


Diagram 3

3. Now you need to start sewing top and sides together to form the cube block. It's a little hard to show this, but take one print square E and with right sides together you will start to sew one side of square E to side A, then to side B, side C and side D. You will need to pin in place first to be sure you match up your side seams of the animal squares to the corners of the square E print. Diagram 3
4. Press seams open. Repeat for the bottom of the cube block but on the last side, leave a 3" hole so you can turn and stuff the cube you have just created.
5. Turn cube to the right side and fill with the poly fiber fill. Blind stitch the opening closed. Repeat steps for the other 6 play block cubes.

Be sure to visit [www.windhamfabrics.com](http://www.windhamfabrics.com) to see the complete collection and to download this and other Free Projects