

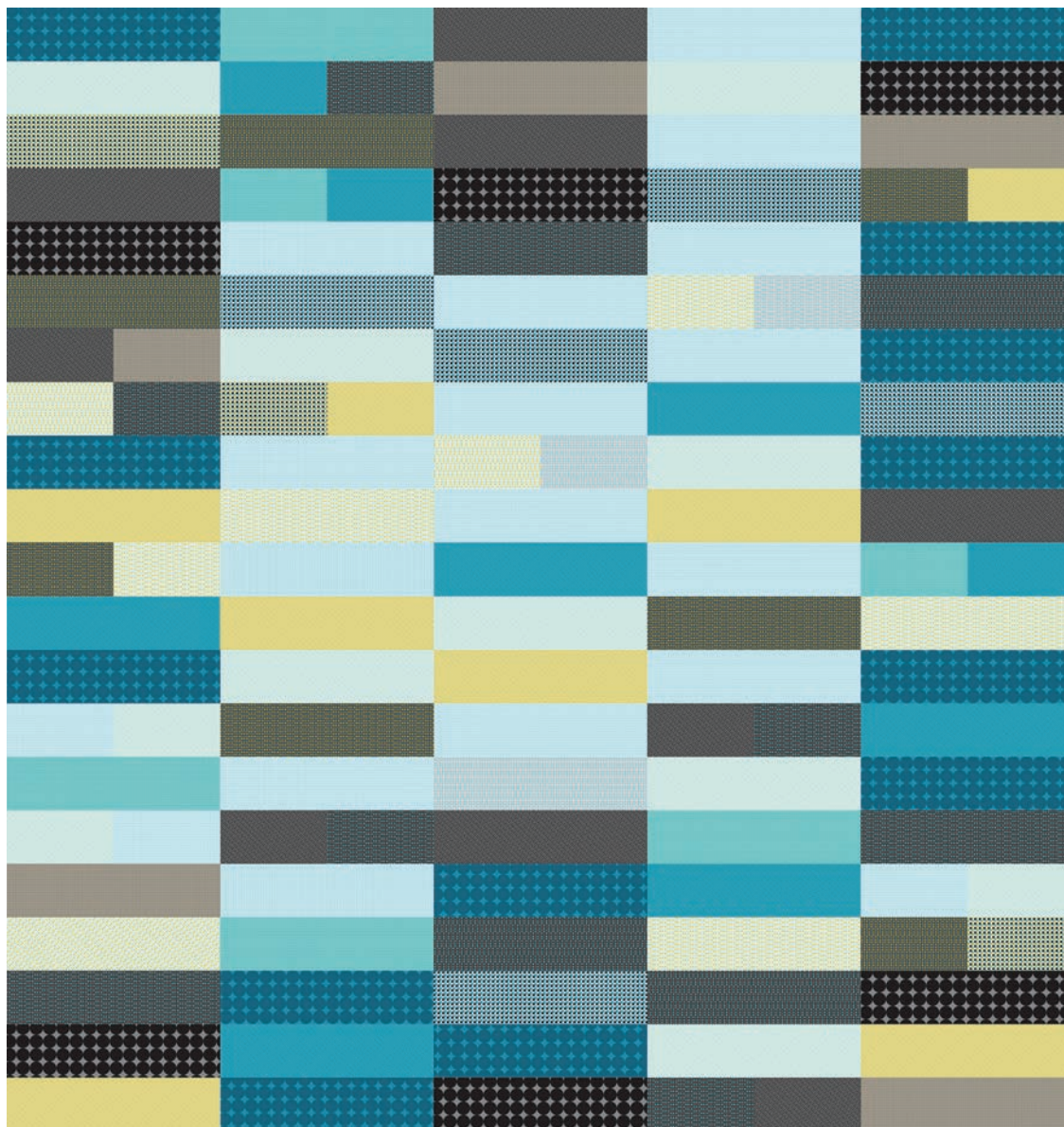
# Fogo Island

designed by Heidi Pridemore

featuring the Circular Logic fabric collection by Janine Vangool

QUILT SIZE: 100" x 105"

FREE  
PROJECT



THIS IS A DIGITAL REPRESENTATION OF THE QUILT TOP, FABRIC MAY VARY.

**PLEASE NOTE:** BEFORE MAKING YOUR PROJECT, CHECK FOR ANY PATTERN UPDATES AT WINDHAMFABRICS.COM'S FREE PROJECTS SECTION.



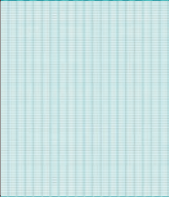
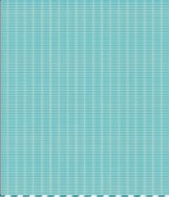

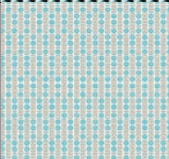


# Fogo Island

KEY	FABRIC	SKU	YD	CUTTING INSTRUCTIONS
A		50945-2 turquoise	1-1/4	<ul style="list-style-type: none"><li>• (7) 5-1/2" x Width of Fabric (WOF) strips. Sub-cut the strips into (13) 5-1/2" x 20-1/2" strips.</li></ul>
B		50944-5 aqua	7/8	<ul style="list-style-type: none"><li>• (4) 5-1/2" x WOF strips. Sub-cut the strips into (8) 5-1/2" x 20-1/2" strips.</li><li>• (1) 5-1/2" x WOF strip. Sub-cut the strip into (3) 5-1/2" x 10-1/2" strips.</li></ul>
C		50946-4 mustard	1/4	<ul style="list-style-type: none"><li>• (1) 5-1/2" x WOF strip. Sub-cut the strips into (1) 5-1/2" x 20-1/2" strip and (2) 5-1/2" x 10-1/2" strips.</li></ul>
D		50944-8 black	3/4	<ul style="list-style-type: none"><li>• (3) 5-1/2" x WOF strips. Sub-cut the strips into (5) 5-1/2" x 20-1/2" strips.</li><li>• (1) 5-1/2" x WOF strip. Sub-cut the strip into (4) 5-1/2" x 10-1/2" strips.</li></ul>
E		50945-8 black	2/3	<ul style="list-style-type: none"><li>• (3) 5-1/2" x WOF strips. Sub-cut the strips into (6) 5-1/2" x 20-1/2" strips.</li></ul>
F		50943-4 mustard	2/3	<ul style="list-style-type: none"><li>• (2) 5-1/2" x WOF strips. Sub-cut the strips into (4) 5-1/2" x 20-1/2" strips.</li><li>• (1) 5-1/2" x WOF strip. Sub-cut the strip into (3) 5-1/2" x 10-1/2" strips.</li></ul>
G		50947-3 grey	2/3	<ul style="list-style-type: none"><li>• (2) 5-1/2" x WOF strips. Sub-cut the strips into (4) 5-1/2" x 20-1/2" strips.</li><li>• (1) 5-1/2" x 10-1/2" strip.</li></ul>
H		50943-5 aqua	2/3	<ul style="list-style-type: none"><li>• (2) 5-1/2" x WOF strips. Sub-cut the strips into (4) 5-1/2" x 20-1/2" strips.</li><li>• (1) 5-1/2" x WOF strip. Sub-cut the strip into (4) 5-1/2" x 10-1/2" strips.</li></ul>
I		50943-2 turquoise	7/8	<ul style="list-style-type: none"><li>• (3) 5-1/2" x WOF strips. Sub-cut the strips into (6) 5-1/2" x 20-1/2" strips.</li><li>• (2) 5-1/2" x WOF strips. Sub-cut the strips into (5) 5-1/2" x 10-1/2" strips.</li></ul>



# Fogo Island

KEY	FABRIC	SKU	YD	CUTTING INSTRUCTIONS
J		50944-4 mustard	7/8	<ul style="list-style-type: none"> <li>• (3) 5-1/2" x WOF strips. Sub-cut the strips into (6) 5-1/2" x 20-1/2" strips.</li> <li>• (1) 5-1/2" x WOF strip. Sub-cut the strip into (2) 5-1/2" x 10-1/2" strips.</li> </ul>
K		50944-2 turquoise	1-1/2	<ul style="list-style-type: none"> <li>• (3) 5-1/2" x WOF strips. Sub-cut the strips into (6) 5-1/2" x 20-1/2" strips.</li> <li>• (1) 5-1/2" x WOF strip. Sub-cut the strip into (3) 5-1/2" x 10-1/2" strips.</li> </ul> <p><b>Binding</b></p> <ul style="list-style-type: none"> <li>• (11) 2-1/2" x WOF strips for the binding.</li> </ul>
L		50947-5 aqua	1-1/2	<ul style="list-style-type: none"> <li>• (8) 5-1/2" x WOF strips. Sub-cut the strips into (15) 5-1/2" x 20-1/2" strips.</li> <li>• (1) 5-1/2" x WOF strip. Sub-cut the strip into (3) 5-1/2" x 10-1/2" strips.</li> </ul>
M		50947-2 turquoise	2/3	<ul style="list-style-type: none"> <li>• (2) 5-1/2" x WOF strips. Sub-cut the strips into (4) 5-1/2" x 20-1/2" strips.</li> <li>• (1) 5-1/2" x WOF strip. Sub-cut the strip into (2) 5-1/2" x 10-1/2" strips.</li> </ul>
N		50946-2 turquoise	2/3	<ul style="list-style-type: none"> <li>• (3) 5-1/2" x WOF strips. Sub-cut the strips into (5) 5-1/2" x 20-1/2" strips.</li> </ul>
O		50943-3 grey	1/4	<ul style="list-style-type: none"> <li>• (1) 5-1/2" x WOF strip. Sub-cut the strip into (1) 5-1/2" x 20-1/2" strip and (2) 5-1/2" x 10-1/2" strips.</li> </ul>
		Backing	9	<ul style="list-style-type: none"> <li>• (3) 108" x WOF strips. Sew the strips together and trim to 108" x 113" for the pieced back.</li> </ul>
				Batting 108" x 113"



# Fogo Island

## Quilt Top Assembly

*(Refer to the Quilt Diagram while assembling the quilt top.)*

1. Sew together (16) assorted 5-1/2" x 20-1/2" strips and (10) 5-1/2" x 10-1/2" strips to make **Column One**.
2. Sew together (17) assorted 5-1/2" x 20-1/2" strips and (8) 5-1/2" x 10-1/2" strips to make **Column Two**.
3. Sew together (20) assorted 5-1/2" x 20-1/2" strips and (2) 5-1/2" x 10-1/2" strips to make **Column Three**.
4. Sew together (18) assorted 5-1/2" x 20-1/2" strips and (6) 5-1/2" x 10-1/2" strips to make **Column Four**.
5. Sew together (17) assorted 5-1/2" x 20-1/2" strips and (8) 5-1/2" x 10-1/2" strips to make **Column Five**.
6. Sew the (5) **Columns** together, in numerical order, to make the quilt top.

## Finishing

7. Layer and quilt as desired.
8. Sew the (11) **K** 2-1/2" x WOF strips together end-to-end with 45-degree seams to make the binding. Fold this long strip in half lengthwise with wrong sides together and press.
9. Bind as desired.



# Fogo Island

SIZE: 100" X 105"

## Quilt Diagram

