

# Bloomers

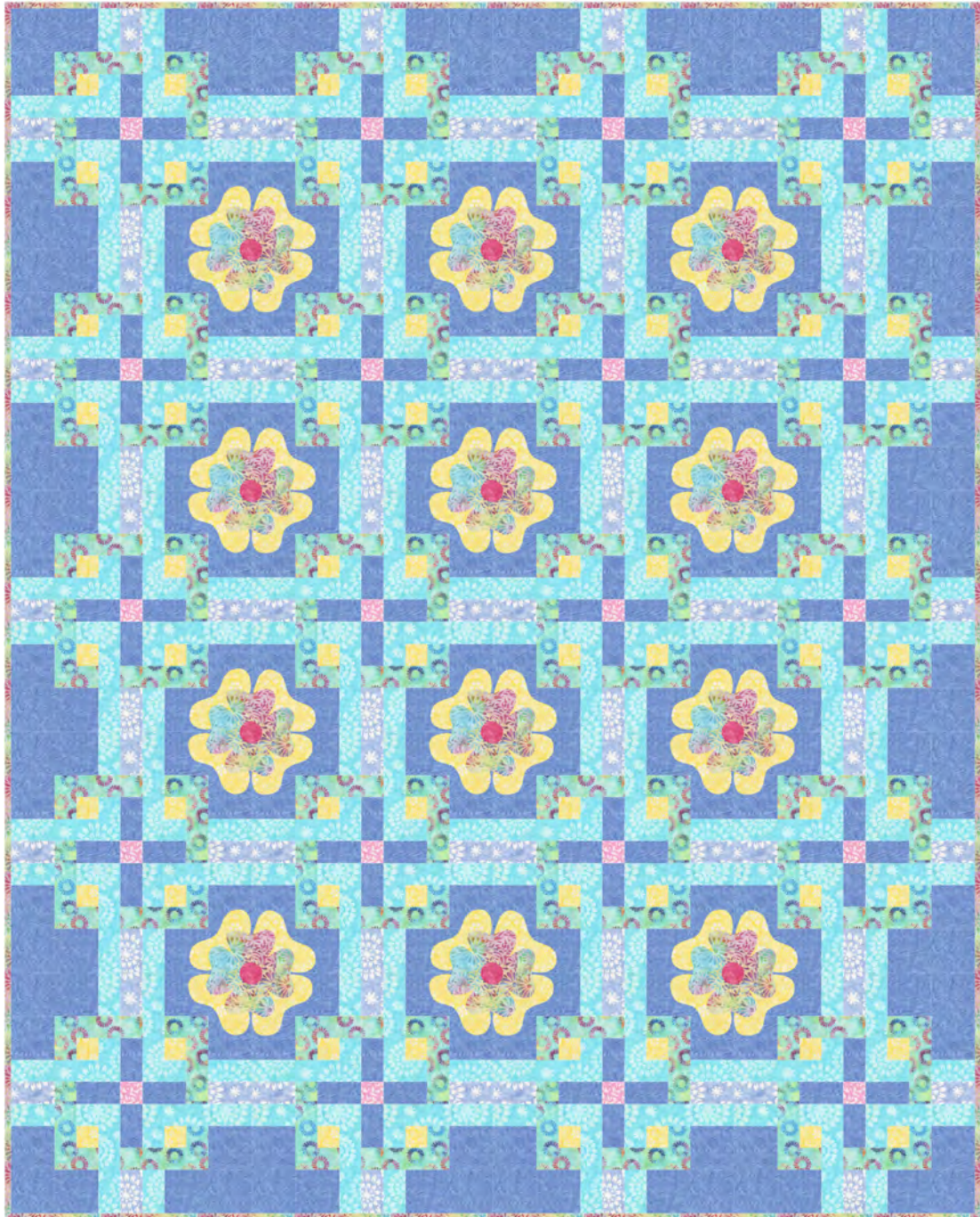
CONFIDENT  
BEGINNER  
SKILL

Designed by Christine Stainbrook of Project House 360

Featuring *Lollipop* batiks by Jacqueline de Jonge

SIZE: 60" x 75"

FREE BATIK  
PROJECT



THIS IS A DIGITAL REPRESENTATION OF THE QUILT TOP, FABRIC MAY VARY.

**PLEASE NOTE:** BEFORE MAKING YOUR PROJECT, CHECK FOR ANY PATTERN UPDATES AT WINDHAMFABRICS.COM'S FREE PROJECTS SECTION.



# Bloomers

**PROJECT DISCLAIMER:** Every effort has been made to ensure that all projects are error free. All the information is presented in good faith, however, no warranty can be given nor results guaranteed. Therefore, we assume no responsibility nor damages that may occur when referring to this pattern. When errors are brought to our attention, we make every effort to correct and post a revision as soon as possible. We suggest you check [windhamfabrics.com](http://windhamfabrics.com) for pattern updates and to test the pattern prior to making the project. Test templates first, before cutting all the pieces. Free projects are not for resale.

**WOF = WIDTH OF FABRIC**

KEY	FABRIC	SKU	YD	CUTTING INSTRUCTIONS
<b>A</b>		BCB15Q-X	3	(7) 6" x WOF. Subcut: (80) 3¼" x 6" rectangles (7) 3¼" x WOF. Subcut: (80) 3¼" squares (4) 6" x WOF. Subcut: (80) 1⅞" x 6" rectangles
<b>B</b>		3643Q-X	1¾	(8) 3¼" x WOF. Subcut: (160) 1⅞" x 3¼" rectangles (4) 6" x WOF. Subcut: (80) 1⅞" x 6" rectangles
<b>C</b>		3645Q-X	⅝	(4) 3¼" x WOF. Subcut: (80) 1⅞" x 3¼" rectangles
<b>D</b>		3644Q-X	1¼	(8) 3¼" x WOF. Subcut: (160) 1⅞" x 3¼" rectangles (4) 1⅞" x WOF. Subcut: (80) 1⅞" squares
<b>E</b>		3638Q-X	1⅞	(4) 1⅞" x WOF. Subcut: (80) 1⅞" squares (48) outer petal appliques
<b>F</b>		3636Q-X	⅞	(20) 1⅞" squares
<b>G</b>		3632Q-X	1¼	(8) 2½" x WOF for binding (48) inner petal appliques
<b>H</b>		BCB10Q-X	⅞	(12) flower center appliques
		Backing (#3644Q-X)	4	Batting: 68" x 83"

## ¼" Seam Allowance Check

Even if you use a ¼" foot, your seam allowance may not be accurate!

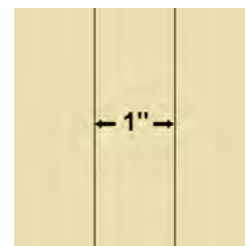
To check if your seam is accurate, cut three 1½" x 3" pieces from scrap fabric.

Sew the pieces together along the 3" side, using what you believe is a ¼" seam.

Press away from the center piece.

Measure.

The center piece should be exactly 1" wide.



If, when you measure, the center is less than 1", your seam allowance is too large.

If it's more than 1", your seam allowance is too small.

Refer to your machine owner's manual for instructions on changing your needle position.

Repeat the test until your center strip measures exactly 1".

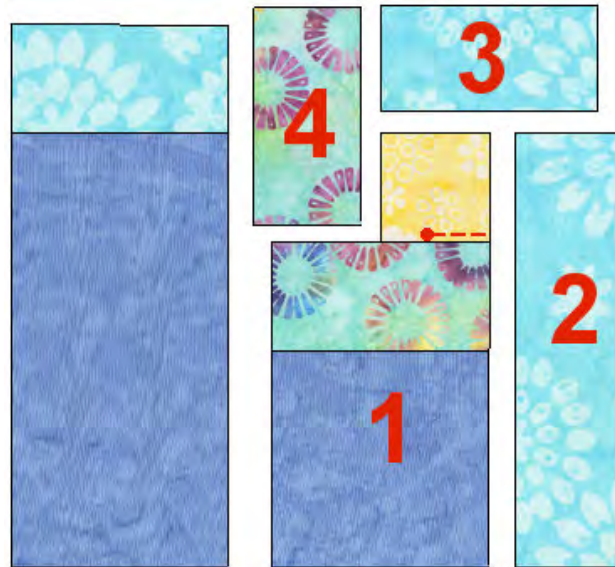


# Bloomers

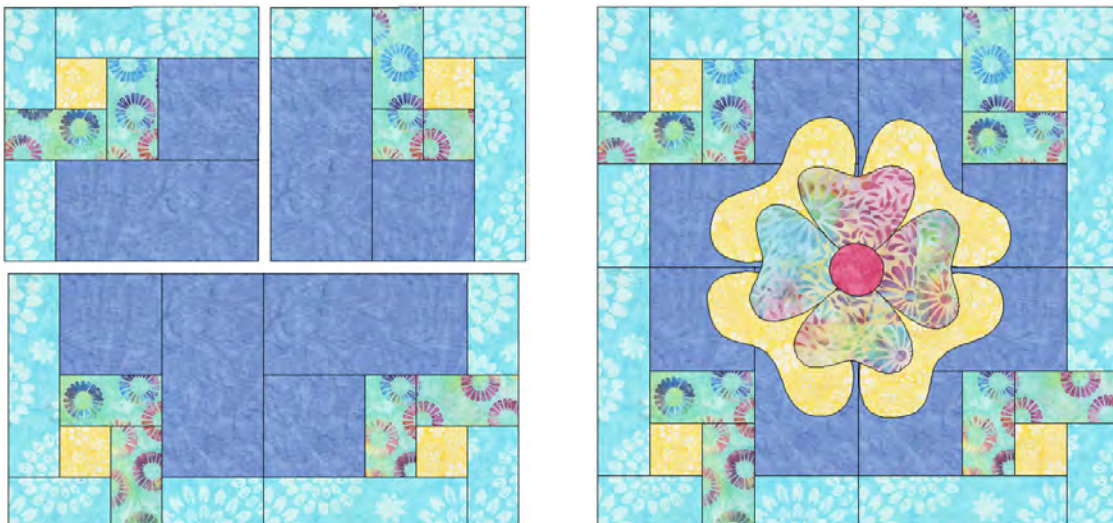
## Applique Blocks:

Make 12

1. Stitch one fabric D  $1\frac{7}{8}$ " x  $3\frac{1}{4}$ " rectangle to one fabric A  $3\frac{1}{4}$ " square.
2. Use a partial seam to attach unit from step 1 to one fabric E  $1\frac{7}{8}$ " square. (red dotted line, beginning at red dot and stitching to edge as shown) Press away from square. Stitching order is numbered.
3. Add one fabric B  $1\frac{7}{8}$ " x 6" rectangle. Press away from square.
4. Add one fabric B  $1\frac{7}{8}$ " x  $3\frac{1}{4}$ " rectangle. Press away from square.
5. Add one fabric D  $1\frac{7}{8}$ " x  $3\frac{1}{4}$ " rectangle. Press away from square.
6. Complete partial seam and press away from square.
7. Stitch one fabric B  $1\frac{7}{8}$ " x  $3\frac{1}{4}$ " rectangle to one fabric A  $3\frac{1}{4}$ " x 6" rectangle. Add to complete the unit. Square to  $7\frac{1}{4}$ ". Make four units.



8. Stitch four units together as shown. Square to 14".
9. Prepare pieces for applique using your favorite method. Apply one flower to the center of the block. Make 12 blocks.



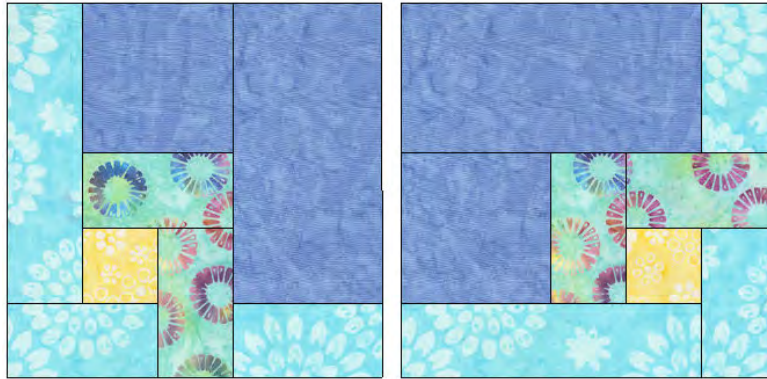


# Bloomers

## Blocks:

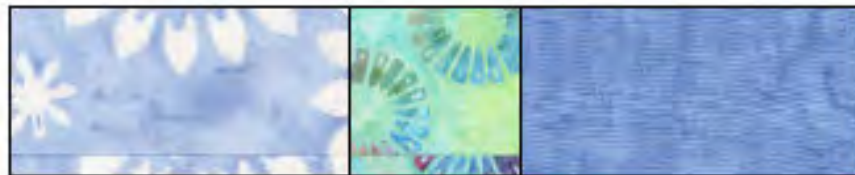
Make 32

10. Follow steps 1-7 for the applique blocks to make 32 block units.
11. Stitch 28 units together in pairs as shown.



## Assembly:

12. To make sashing units, stitch one fabric A  $1\frac{7}{8}$ " x  $3\frac{1}{4}$ " rectangle, one fabric C  $1\frac{7}{8}$ " x  $3\frac{1}{4}$ " rectangle and one fabric D  $1\frac{7}{8}$ " square together as shown. Trim to  $1\frac{7}{8}$ " x  $7\frac{1}{4}$ ". Make 80 sashing units.
13. Use the assembly diagram on page 4 to combine the blocks and sashing units, adding the fabric F  $1\frac{7}{8}$ " squares as shown.



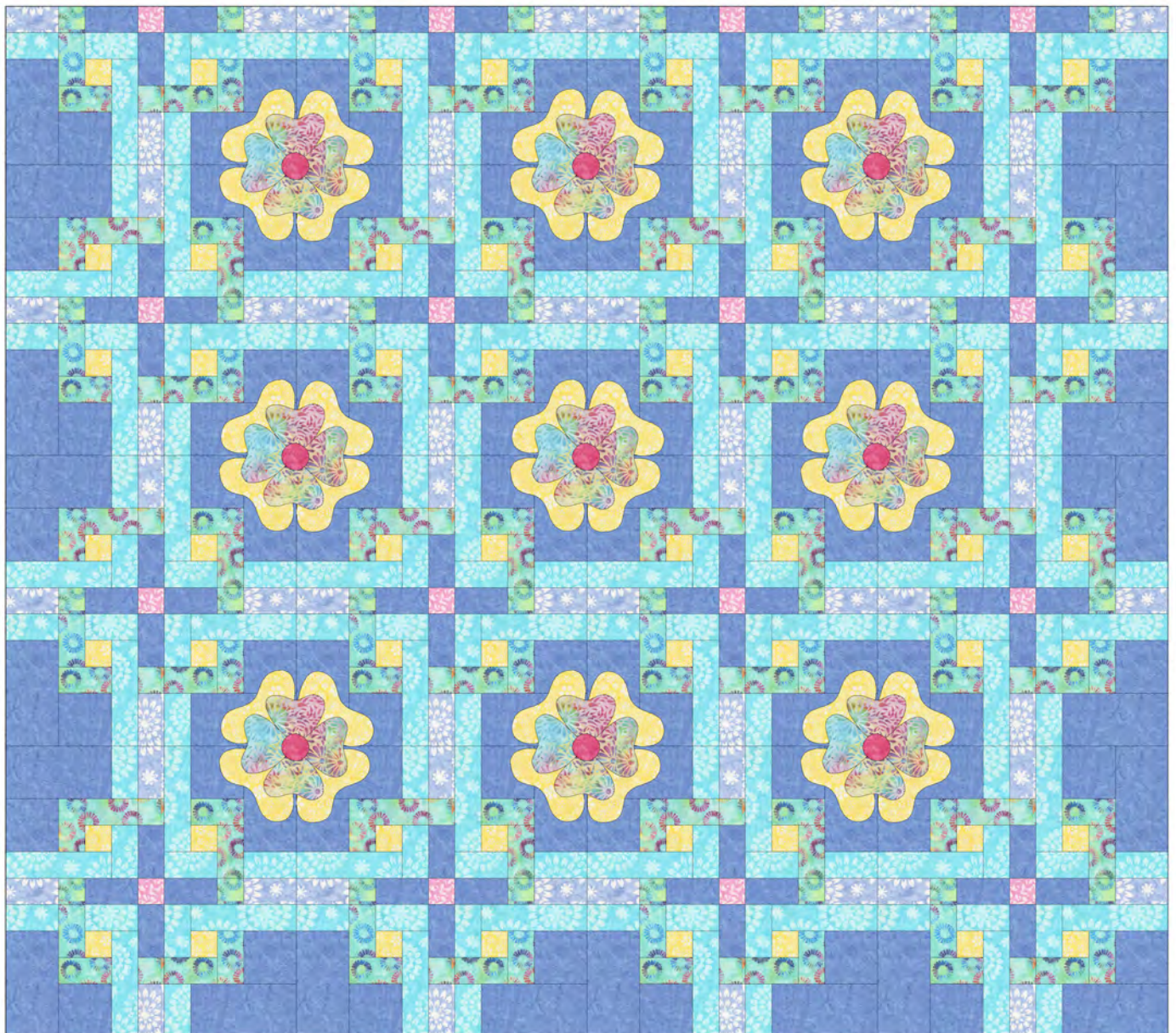
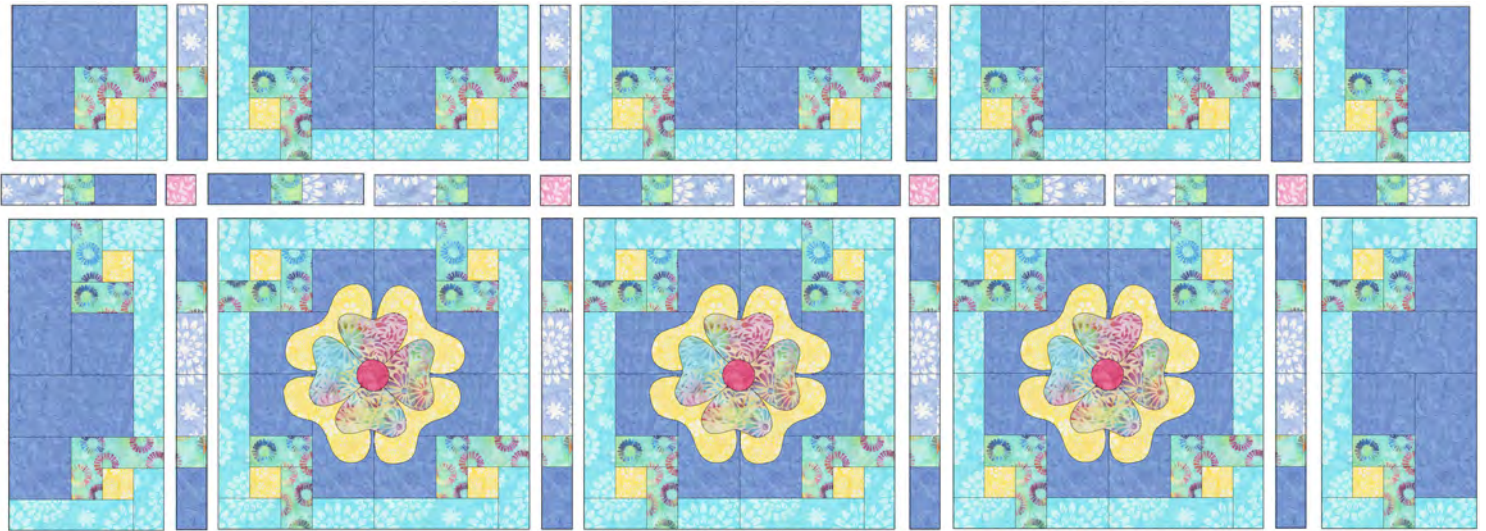
## Finishing:

14. Layer, baste, and quilt as desired.
15. Bind with eight fabric G  $2\frac{1}{2}$ " x WOF strips.



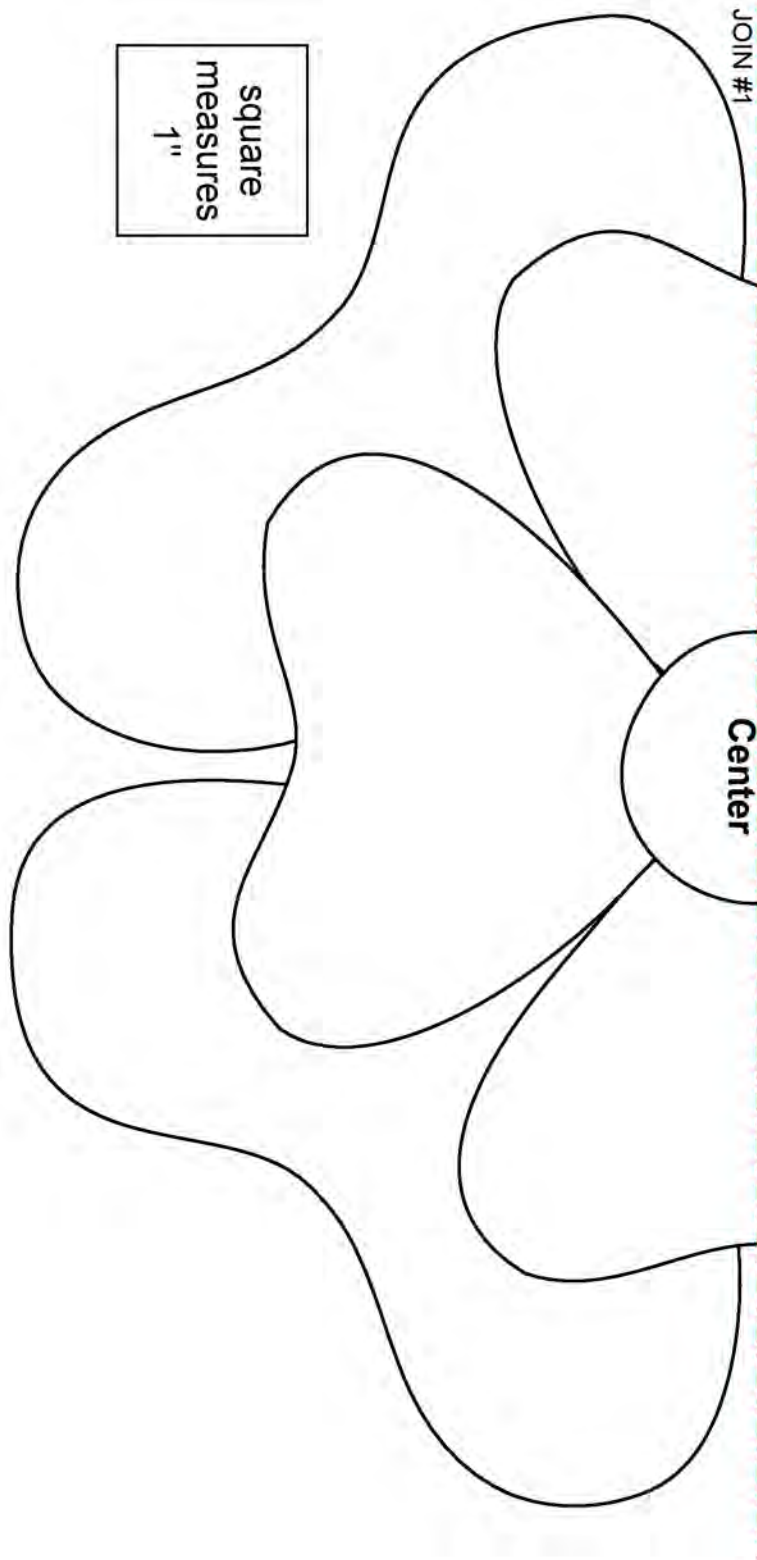
# Bloomers

## Assembly Diagram





# Bloomers





# Bloomers

Full Size Appliques  
NO SEAM ALLOWANCE  
INCLUDED

square  
measures  
1"

