

INTERMEDIATE
SKILL

Bee & Butterfly Placemats

designed by Sally Kelly
featuring *Wild Meadow* by Sue Miano

SIZE: 15" x 12"

APPLIQUÉ TECHNIQUE REQUIRED



LIGHT VERSION



DARK VERSION



LIGHT VERSION



DARK VERSION

THIS IS A DIGITAL REPRESENTATION OF THE QUILT TOP, FABRIC MAY VARY.

PLEASE NOTE: BEFORE MAKING YOUR PROJECT, CHECK FOR ANY PATTERN UPDATES AT WINDHAMFABRICS.COM'S FREE PROJECTS SECTION.

FREE
PROJECT



Bee Placemat

PROJECT DISCLAIMER: Every effort has been made to ensure that all projects are error free. All the information is presented in good faith, however, no warranty can be given nor results guaranteed. Therefore, we assume no responsibility nor damages that may occur when referring to this pattern. When errors are brought to our attention, we make every effort to correct and post a revision as soon as possible. We suggest you check windhamfabrics.com for pattern updates and to test the pattern prior to making the project. **Test templates first, before cutting all the pieces.** Free projects are not for resale.

NOTE: Mark pieces as you cut. This will ease assembly. Read the entire pattern before you begin. Appliqué technique required.

NOTE: YARDAGES BELOW ARE FOR A SINGLE PLACEMAT.

KEY	FABRIC	SKU	YD	CUTTING INSTRUCTIONS
A		54391-1 Navy	Fat 1/8	(1) B12 and (1) B13 pieces.
B		54392-9 Aqua	Fat 1/8	(1) B7, (1) B9, (1) B19, and (1) B20 pieces.
C		54387-1 Navy	Fat 1/8	(1) B4 piece.
D		52782-42 Marigold	Fat 1/8	(1) B5, (1) B8, (1) B10, and (4) B14 pieces.
E		52782-14 Galapagos	Fat 1/8	(1) B1, (1) B2, (1) B21, and (1) B22 pieces.
F		54388-5 Multi	Fat 1/8	(1) B3 piece.
G		54392-4 Teal	Fat 1/8	(1) B11 piece.
H		52782-32 Summer Pink	Fat 1/8	(1) B15 and (1) B16 pieces.
I		54388-3 Coral	Fat 1/8	(1) B17 and (1) B18 pieces.
J		54392-3 Coral INCLUDES BINDING	3/8	(1) B6 piece. Binding: (2) 2-1/2" x WOF strips.
K		52782-8 Spring DARK VERSION	Fat 1/4	(1) 15-1/2" x 12-1/2" strip.
		52782-46 White on White LIGHT VERSION		
		Backing	Fat 1/4	(1) 19" x 16" batting piece.

ADDITIONAL MATERIAL: Fusible web; template plastic or poster board for templates.



Butterfly Placemat

PROJECT DISCLAIMER: Every effort has been made to ensure that all projects are error free. All the information is presented in good faith, however, no warranty can be given nor results guaranteed. Therefore, we assume no responsibility nor damages that may occur when referring to this pattern. When errors are brought to our attention, we make every effort to correct and post a revision as soon as possible. We suggest you check windhamfabrics.com for pattern updates and to test the pattern prior to making the project. **Test templates first, before cutting all the pieces.** Free projects are not for resale.

NOTE: Mark pieces as you cut. This will ease assembly. Read the entire pattern before you begin. Appliqué technique required.

NOTE: YARDAGES BELOW ARE FOR A SINGLE PLACEMAT.

KEY	FABRIC	SKU	YD	CUTTING INSTRUCTIONS
A		54391-1 Navy	Fat 1/8	(1) BU1 piece.
B		54392-9 Aqua	Fat 1/8	(1) BU14 and (1) BU19 pieces.
C		54387-1 Navy	Fat 1/8	(1) BU15 and (1) BU20 pieces.
D		52782-42 Marigold	Fat 1/8	(1) BU12 and (1) BU18 pieces.
E		52782-14 Galapagos	Fat 1/8	(1) BU3 and (1) BU4 pieces.
F		54388-5 Multi	Fat 1/8	(1) BU16 and (1) BU21 pieces.
G		54392-4 Teal INCLUDES BINDING	3/8	(1) BU5 and (1) BU8 pieces. BINDING: (2) 2-1/2" x WOF strips.
H		52782-32 Summer Pink	Fat 1/8	(2) B13 pieces.
I		54388-3 Coral	Fat 1/8	(1) BU9 piece.
J		54392-3 Coral	Fat 1/8	(2) BU10 pieces.
K		52782-40 Persimmon	Fat 1/8	(1) BU11 and (1) BU17 pieces.
L		52782-17 Aqua	Fat 1/8	(2) BU2 pieces.
M		54389-2 White	Fat 1/8	(1) BU6 and (1) BU7 pieces.
N		52782-8 Spring DARK VERSION	Fat 1/4	(1) 15-1/2" x 12-1/2" strip.
		52782-46 White on White LIGHT VERSION		
		Backing	Fat 1/4	(1) 19" x 16" batting piece.

ADDITIONAL MATERIAL: Fusible web; template plastic or poster board for templates.



Bee & Butterfly Placemats

PLACEMAT TOP ASSEMBLY

REFER TO THE PLACEMAT LAYOUTS IN FIGURES 1-2 ON PAGE 5.

1. Following the manufacturer's instructions, trace the listed number of each template onto the paper side of the fusible web. Roughly cut out each shape about 1/8" outside the drawn lines.
2. Press each drawn shape onto the wrong side of the fabrics as listed on the templates. Cut out each shape on the drawn lines.
3. Refer to **Figure 1** to arrange and press the assorted **Bee** pieces onto the **K** 15-1/2" x 12-1/2" dark or light background.
4. Finish the raw edges of each shape with a decorative stitch such as a buttonhole or satin stitch to complete the **Bee Placemat** top.
5. Repeat **Steps 1-4** and refer to **Figure 2** to assemble the **Butterfly Placemat** top using (1) **N** 15-1/2" x 12-1/2" dark or light background.

PLACEMAT FINISHING

6. Layer placemat top with backing and batting, and quilt as desired.

7. Binding

Bee Placemat: Sew (2) **J** 2-1/2" x WOF strips together end-to-end with 45-degree seams. Fold this long strip in half lengthwise with wrong sides together and press.

Butterfly Placemat: Sew (2) **G** 2-1/2" x WOF strips together end-to-end with 45-degree seams. Fold this long strip in half lengthwise with wrong sides together and press.

8. Bind as desired.



Bee & Butterfly Placemats

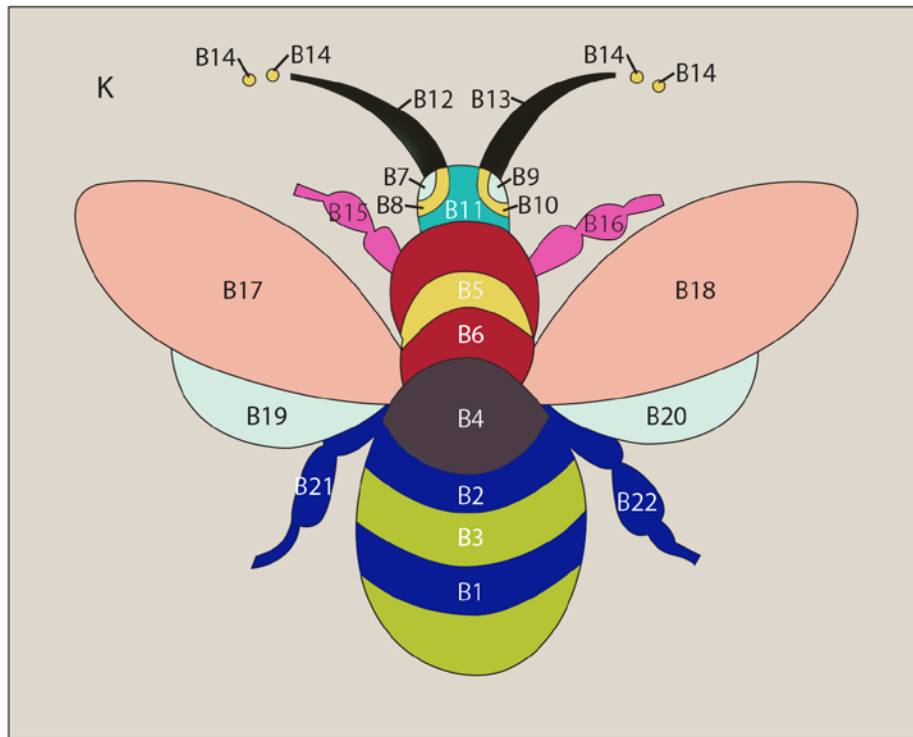


Fig. 1

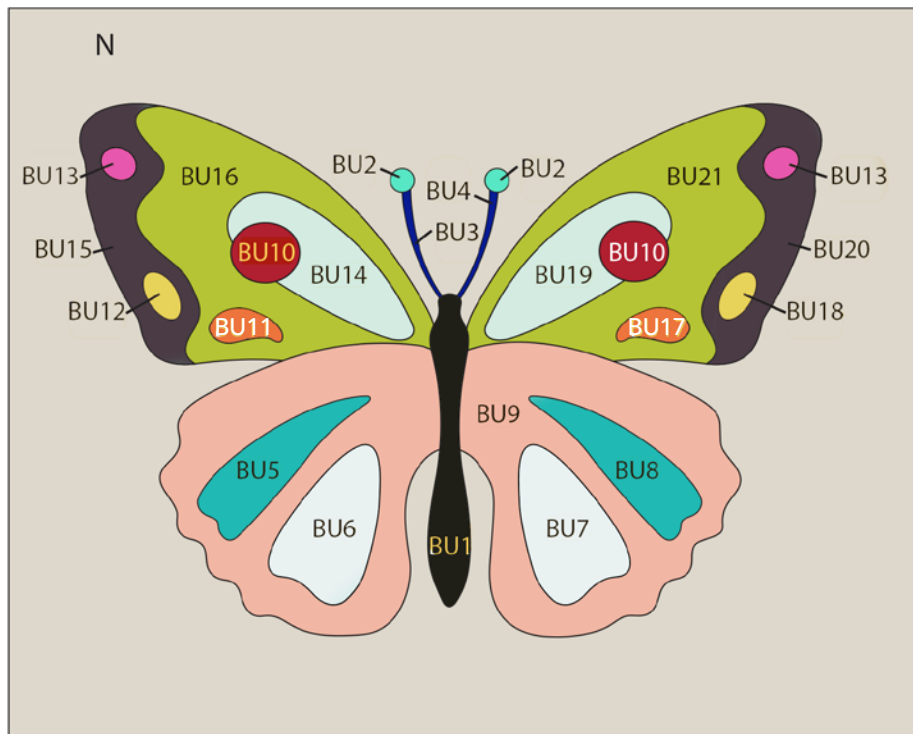


Fig. 2

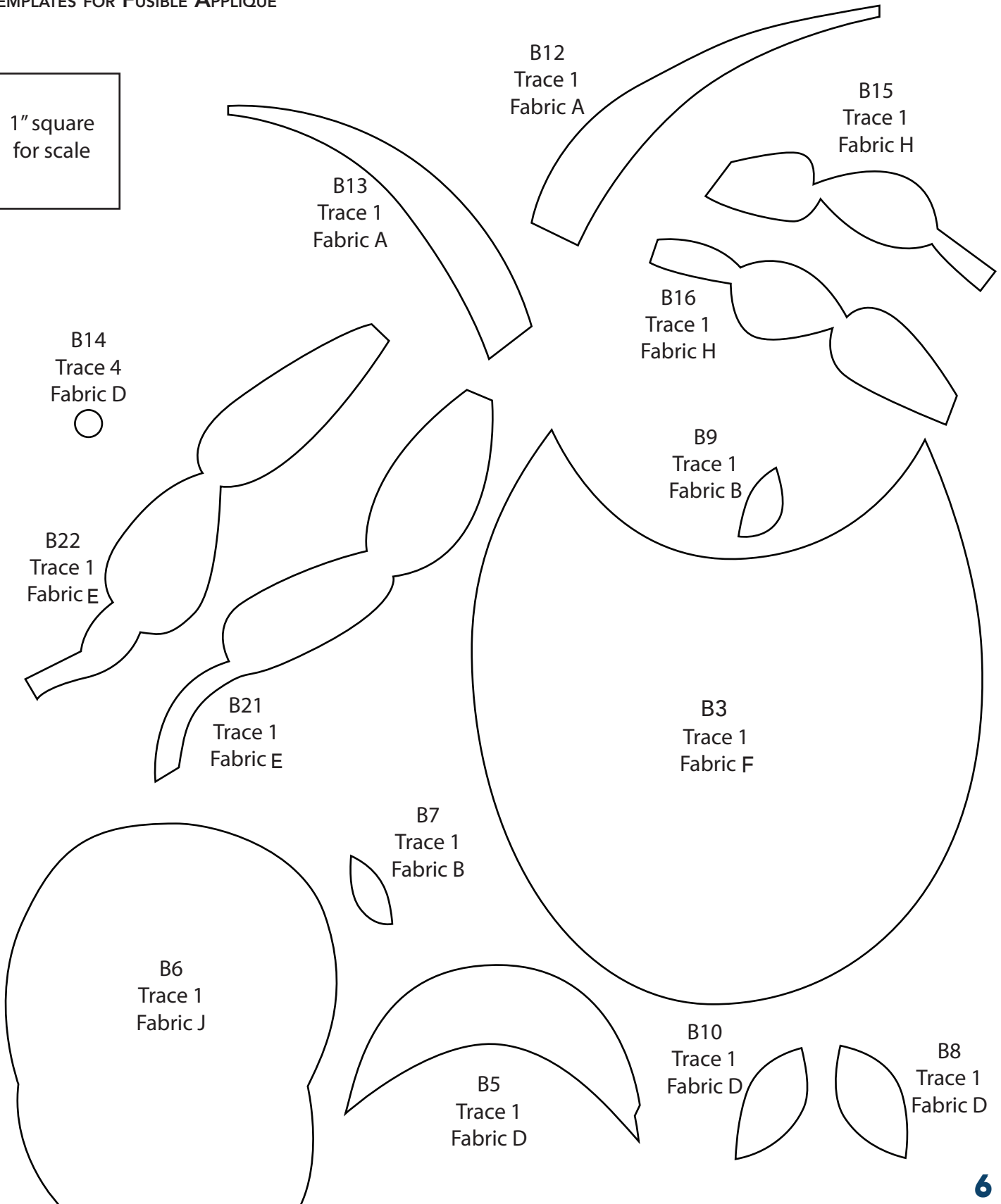


Bee Placemat

TEMPLATES

BEE PLACEMAT FULL-SIZE REVERSED TEMPLATES FOR FUSIBLE APPLIQUÉ

1" square
for scale

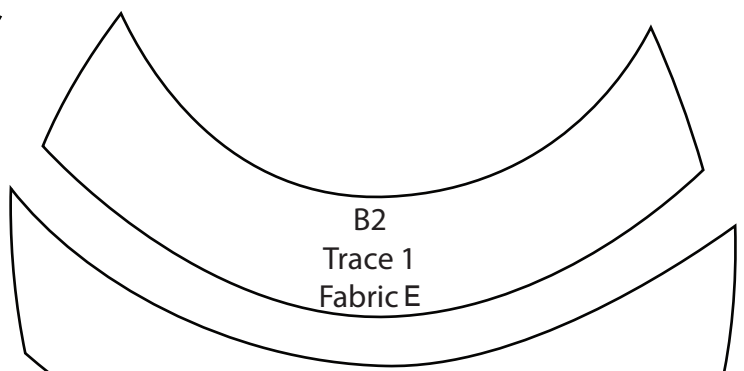
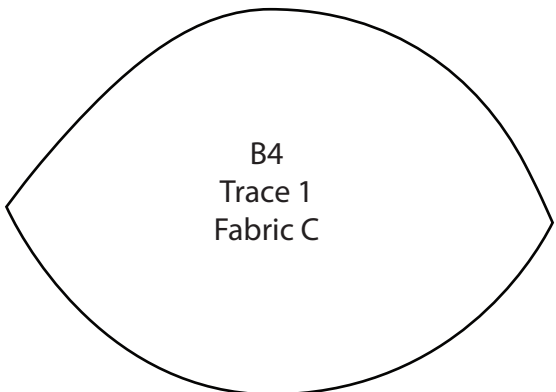
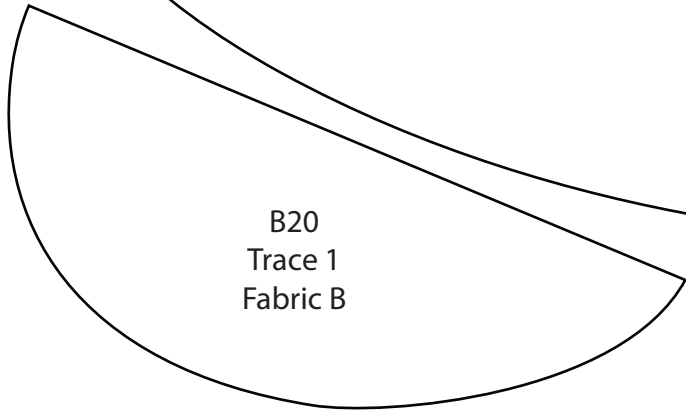
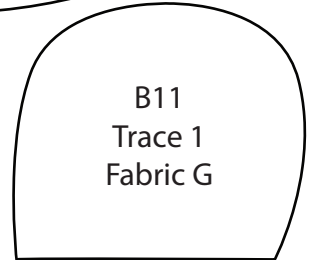
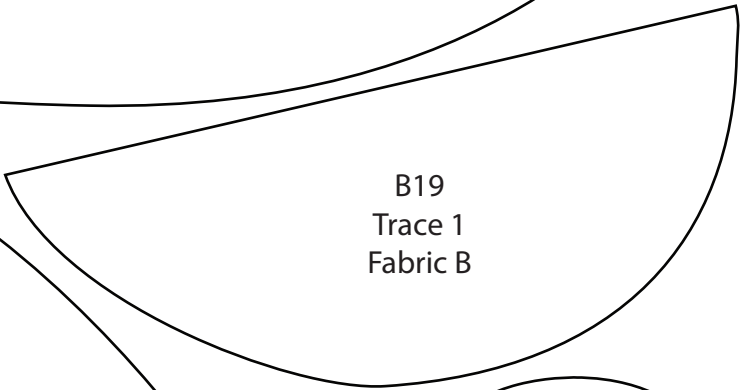
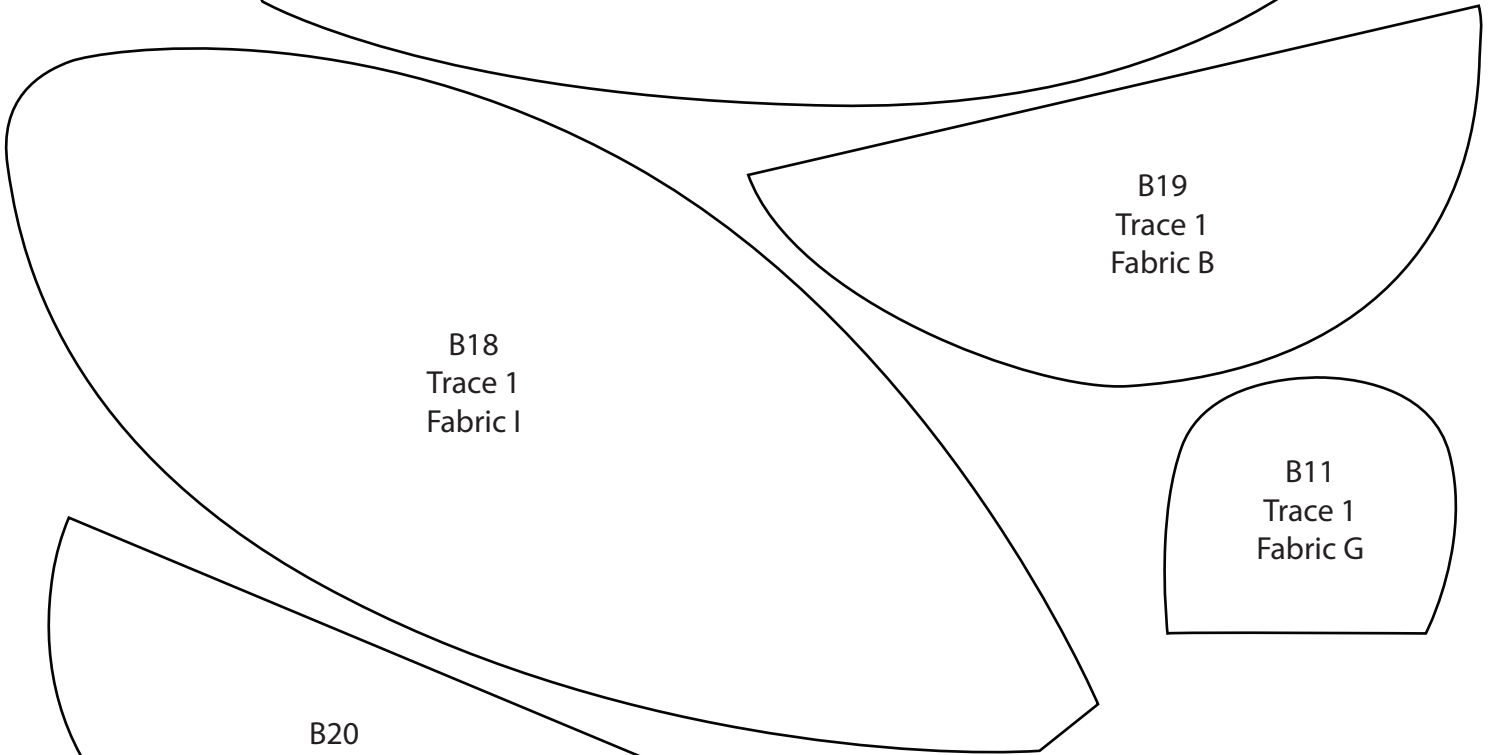
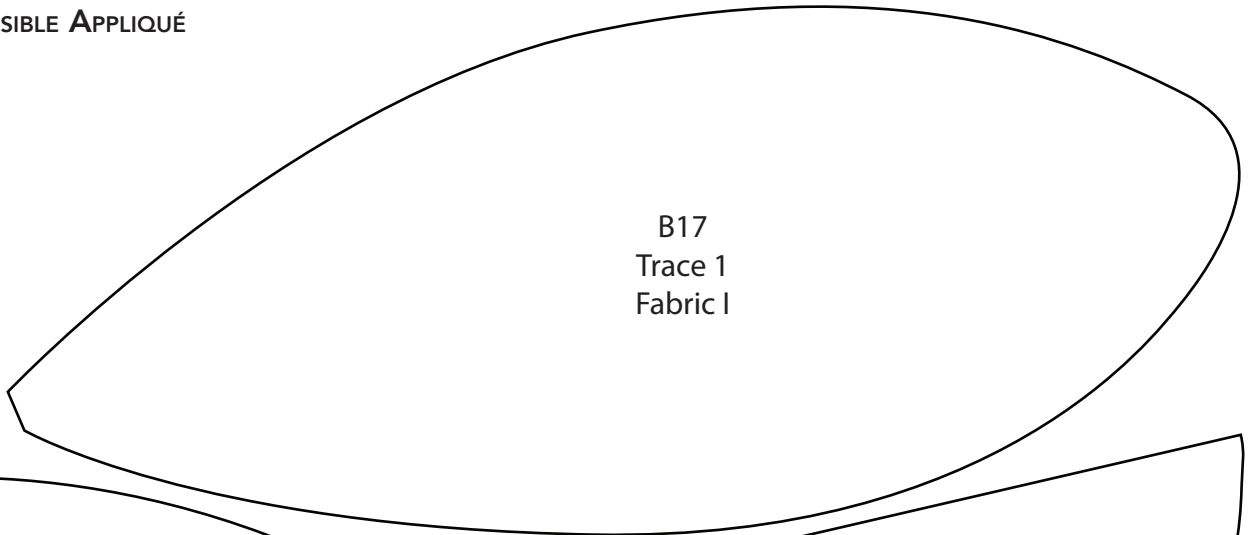




Bee Placemat

TEMPLATES

**BEE PLACEMAT FULL-SIZE REVERSED
TEMPLATES FOR FUSIBLE APPLIQUÉ**

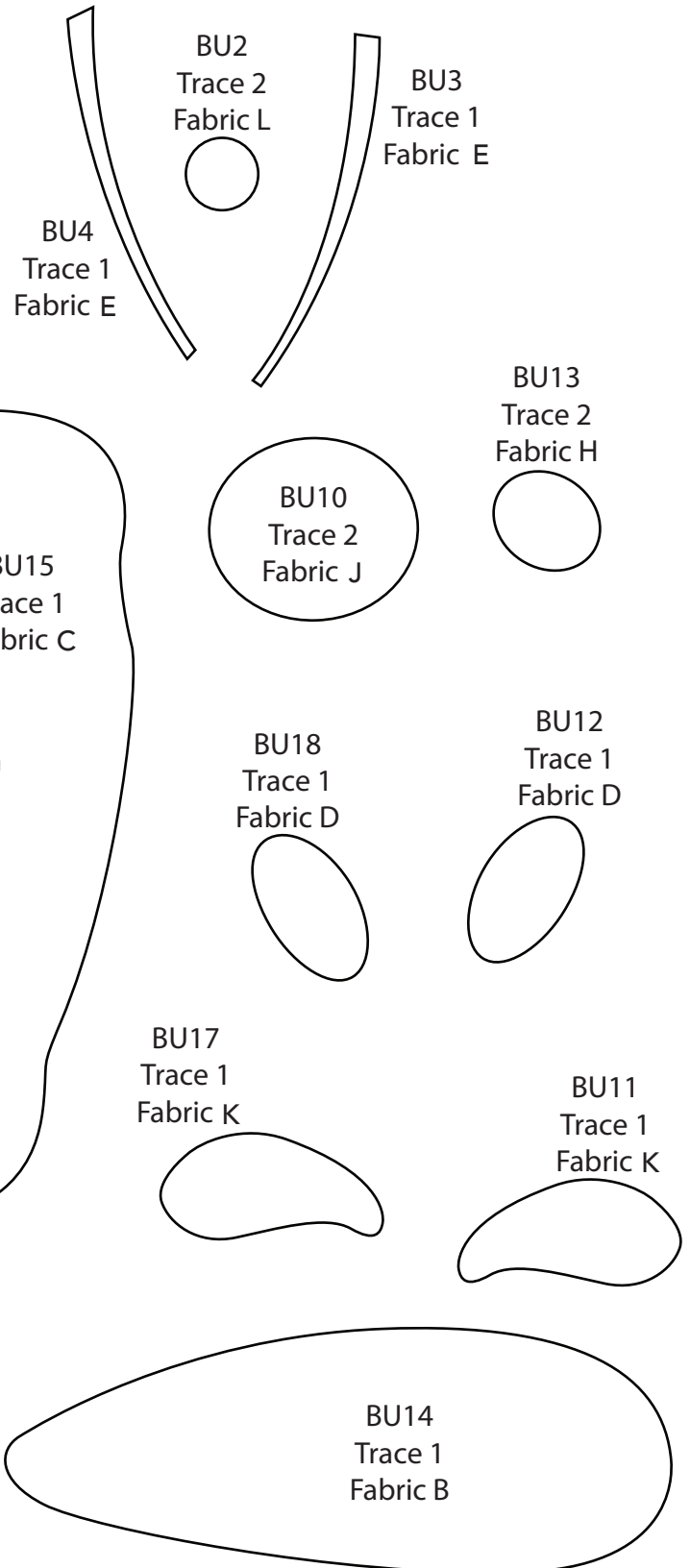
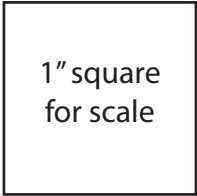




Butterfly Placemat

TEMPLATES

BUTTERFLY PLACEMAT FULL-SIZE REVERSED TEMPLATES FOR FUSIBLE APPLIQUÉ



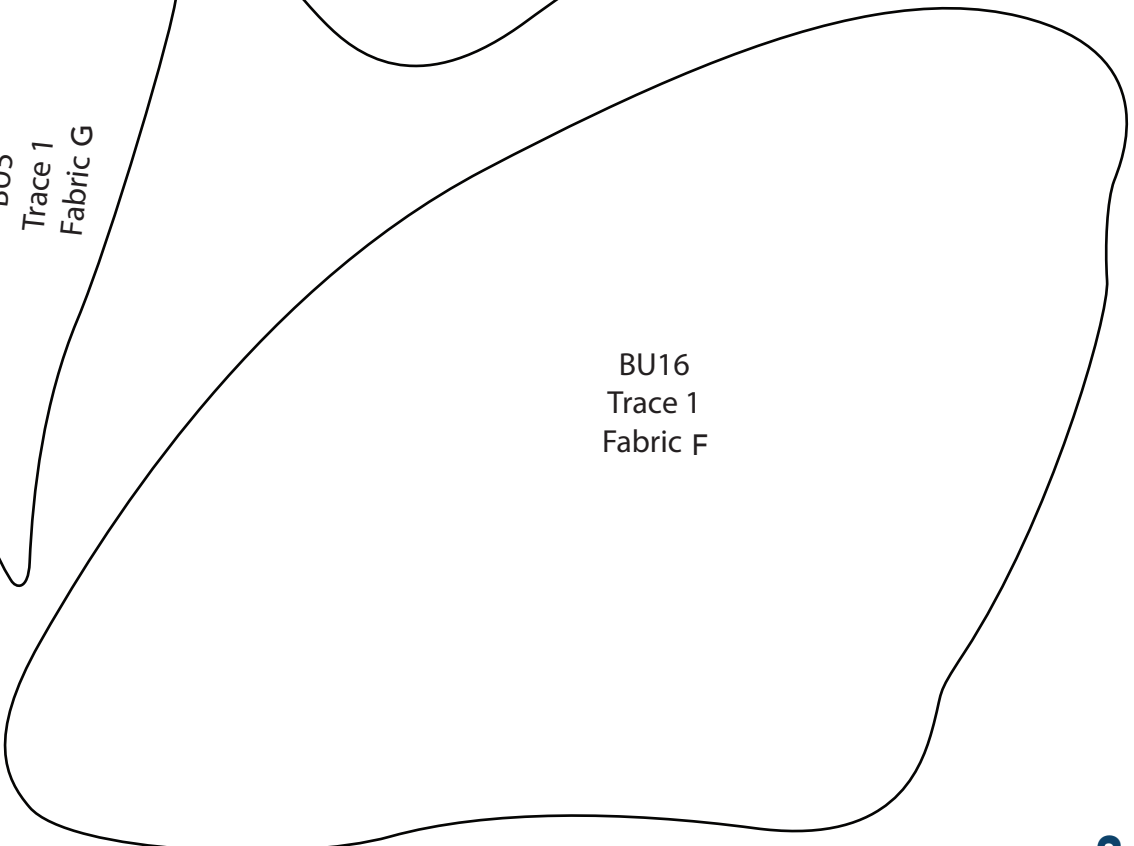
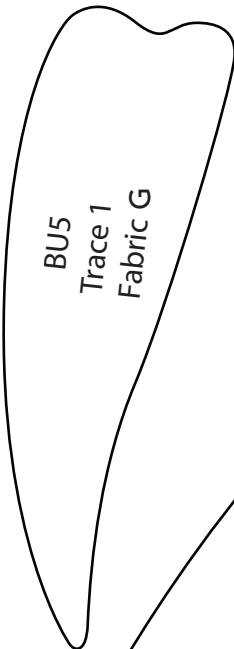
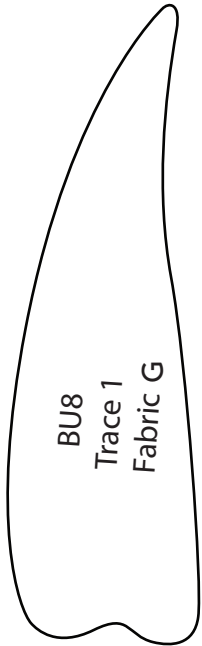
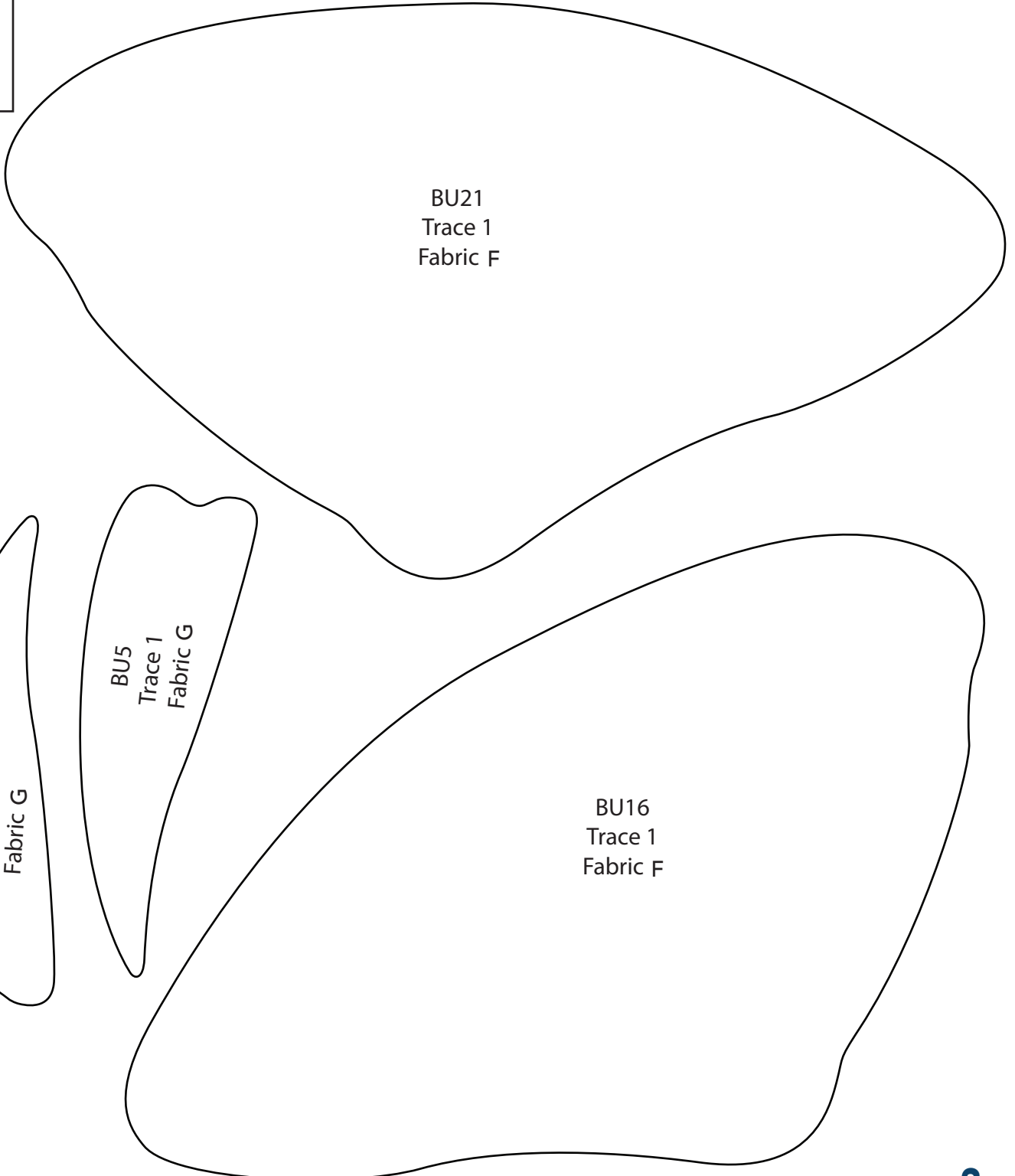


Butterfly Placemat

TEMPLATES

BUTTERFLY PLACEMAT FULL-SIZE REVERSED
TEMPLATES FOR FUSIBLE APPLIQUÉ

1" square
for scale





Butterfly Placemat

TEMPLATES

BUTTERFLY PLACEMAT FULL-SIZE REVERSED
TEMPLATES FOR FUSIBLE APPLIQUÉ

