

In The Tree Top

Designed by Bethany Fuller
Featuring the Rumble collection by Whistler Studios
Size: 42" x 42"



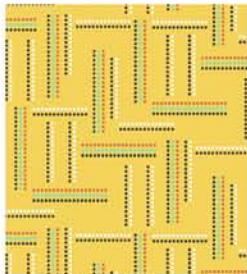
Check www.windhamfabrics.com Free Project section to see if there are any pattern updates before you start your quilt project



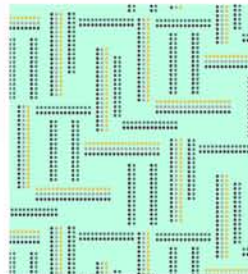
812 Jersey Ave ~ Jersey City, NJ 07310 ~ 201.659.0444 ~ FAX: 201.659.9719
www.windhamfabrics.com email: retail@windhamfabrics.com

In The Tree Top

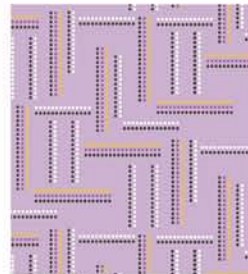
Page 2



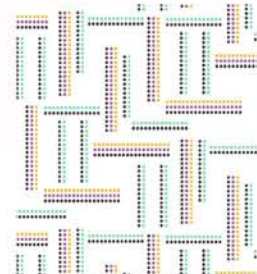
40757-1 Yellow



40757-2 Mint



40757-3 Lavender



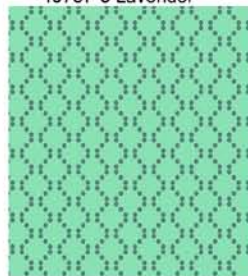
40757-4 White



40758-1 Yellow



40758-3 Lavender



40759-5 Green



40759-6 Purple



40754-X Multi



40755-X Multi



40756-1 Yellow



40759-8 Grey



40759-7 Orange

1/8 yd each of 40757-1, 40758-1., 40757-3, 40758-3, 40757-2, 40759-5 for trees
3/8 yd 40757-4 for Background
1/3 yd 40754-X for Focus
1/3 yd 40759-8 for Sashing
1/4 yd 40759-7 for Cornerstones and Tree Trunks
1/2 yd 40755-X for Border
1/8 yd 40756-1 for Corners
3/8 yd 40759-6 for Binding

1 1/2 yds backing

In The Tree Top

Page 3

Cutting Instructions

From 40754-X cut 4 – 10 ½” squares

From 40757-4 cut:

3 – 6 ¼” squares, cut in half diagonally twice

5 – 5 7/8” squares, cut in half diagonally once

5 – 5” squares, cut in half diagonally once

From 40759-7 cut:

5 – 2 ¼” x 5 ½” rectangles for trunks

16 – 1 ¾” squares for cornerstones

From both yellows (40757-1 and 40788-1) cut 12 – 2 5/8” squares

From both purples (40757-3 and 40758-3) cut 12 – 2 5/8” squares

From both greens (40757-2 and 40759-5) cut 6 – 2 5/8” squares

From 40759-8 cut 24 – 1 ¾” x 10 ½” rectangles for sashing

From 40755-X cut 4 – 4” strips for borders

From 40756-1 cut 4 – 4” squares for corners

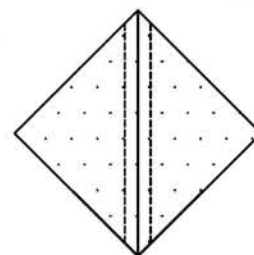
From 40759-6 cut 5 – 2 ½” strips for binding

Piecing Instructions

From the yellow print squares make Half Square Triangles. Draw a line diagonally on the wrong side of one set of squares. Pair, right sides together with the other fabric. Sew ¼” on both sides of the drawn lines. Cut on line and press seams toward the darker fabric. You should have 24 Yellow Half Square Triangles.

Repeat for the Green and Purple fabrics. You should have 24 Purple Half Square Triangles and 12 Green Half Square Triangles.

Sew your Half Square Triangles into pairs and then into 4's to make pinwheel blocks.

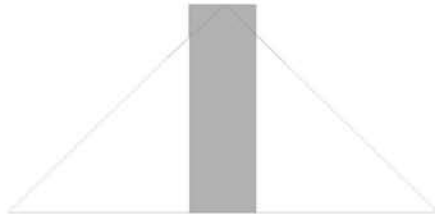


WINDHAM FABRICS

In The Tree Top

Page 4

Sew the background triangles cut from the 5" squares to opposite sides of the tree trunk rectangles. Trim the top of the rectangle to be even with the triangle edges to create a point.



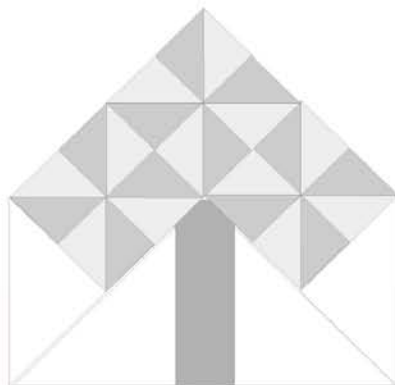
Sew a background triangle cut from the 6 1/4" squares to one side of a pinwheel.



Sew two pinwheels and another triangle of the same size together.



Sew these units to the sides of the triangle pieced above.

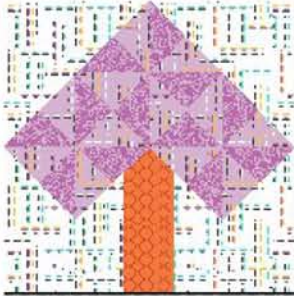


WINDHAM FABRICS

In The Tree Top

Page 5

Sew the triangles cut from the 5 7/8" squares to the top two corners to complete the block.



Repeat this process to make 2 yellow, 2 purple and 1 green block.

Sew blocks together with sashing and cornerstones into 3 rows of 3.

Measure quilt center. Cut border strips to this length. Pin well and sew 2 strips to opposite sides.

Sew corner squares to ends of the remaining two border strips. Pin well and sew to remaining sides of quilt.

Quilt, bind and enjoy!

Be sure to visit www.windhamfabrics.com to see the complete collection
and to download this and other Free Projects

